

33 577 002 EUROPLUS SINGLE-LEVER SHOWER MIXER 1/2"

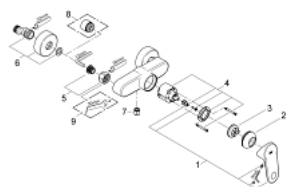


PRODUCT DESCRIPTION

- Colour: chrome
- wall mounted
- metal lever
- GROHE SilkMove 46 mm ceramic cartridge
- temperature limiter
- GROHE Long-Life finish
- adjustable flow rate limiter
- adjustable minimum flow rate approx. 2.5 l/min
- shower bottom outlet 1/2" with integrated non return valve
- S-unions
- protected against backflow
- min. recommended pressure 1.0 bar



33 577 002 EUROPLUS SINGLE-LEVER SHOWER MIXER 1/2"



SPARE PARTS, 10月 2008 – now

- 1: Lever (Order-nr. 46651000)
- 2: Cap (Order-nr. 46570000)
- 3: Temperature limiter (Order-nr. 46375000)
- 4: Cartridge (Order-nr. 46048000)
- 5: Screw connection 1/2" (Order-nr. 45044000)
- 6: S-union (Order-nr. 12662000)
- 7: Non-return valve (Order-nr. 08565000)
- 8: Extension 3/4", 20 mm (Order-nr. 0713000M)*
- 9: Special spanner (Order-nr. 19377000)*

* Optional accessories