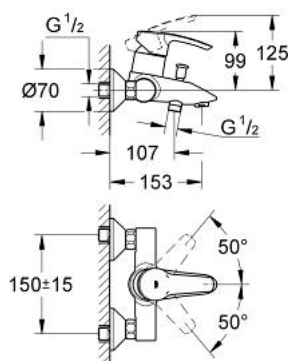


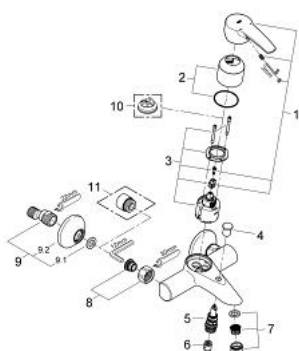
33 591 001 EUROSTYLE SINGLE-LEVER BATH/SHOWER MIXER



PRODUCT DESCRIPTION

- Colour: chrome
- wall mounted
- metal lever
- GROHE SilkMove 46 mm ceramic cartridge
- GROHE Long-Life finish
- adjustable flow rate limiter
- adjustable minimum flow rate approx. 2.5 l/min
- automatic diverter: bath/shower
- mousseur
- integrated non-return valve in shower outlet 1/2"
- S-unions
- metal wall escutcheons
- Protected against backflow
- optional temperature limiter ref. no. 46 375
- noise classification 1 in accordance with DIN4109

33 591 001 EUROSTYLE SINGLE-LEVER BATH/SHOWER MIXER



SPARE PARTS, July 2009 – now

- 1: Lever (Order-nr. 46577000)
- 2: Shield (Order-nr. 46578000)
- 3: Cartridge (Order-nr. 46048000)
- 4: Diverter knob (Order-nr. 65648000)
- 5: Diverter (Order-nr. 65655000)
- 6: Non-return valve (Order-nr. 08565000)
- 7: Mousseur (Order-nr. 13952000)
- 8: Screw joint (Order-nr. 45044000)
- 9: S-union (Order-nr. 12075000)
- 9.1: Ball seal dia. 9x6.8 mm (Order-nr. 0138600M)
- 9.2: Escutcheon (Order-nr. 0221000M)
- 10: Temperature limiter (Order-nr. 46375000)*
- 11: Extension 3/4", 20 mm (Order-nr. 0713000M)*
- * Optional accessories