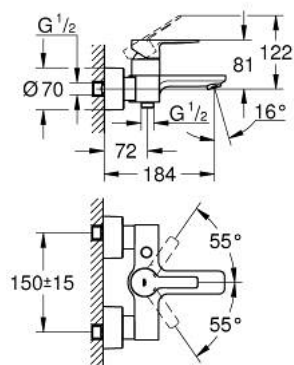
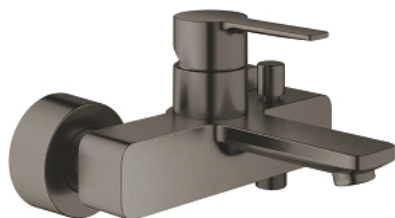


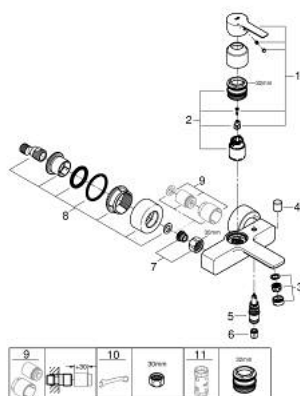
33 849 AL1 LINEARE SINGLE-LEVER BATH/SHOWER MIXER



PRODUCT DESCRIPTION

- Colour: brushed hard graphite
- wall mounted
- metal lever
- GROHE SilkMove 35 mm ceramic cartridge
- with temperature limiter
- GROHE Long-Life finish
- automatic diverter: bath/shower
- mousseur
- shower outlet 1/2"
- integrated non-return valve
- covered S-unions
- Protected against backflow
- minimum pressure 1,0 bar

33 849 AL1 LINEARE SINGLE-LEVER BATH/SHOWER MIXER



SPARE PARTS, March 2019 – now

- 1: Lever (Order-nr. 46987AL0)
- 2: Cartridge (Order-nr. 46374000)
- 3: Mousseur (Order-nr. 13952AL0)
- 4: Diverter knob (Order-nr. 64309AL0)
- 5: Diverter (Order-nr. 46947AL0)
- 6: Non-return valve (Order-nr. 08565000)
- 7: Screw joint (Order-nr. 45044000)
- 8: S-union (Order-nr. 12693AL0)
- 9: Extension set 1/2", 30 mm (Order-nr. 46238000)*
- 10: Special spanner (Order-nr. 19377000)*
- 11: Socket spanner (Order-nr. 19332000)*

* Optional accessories