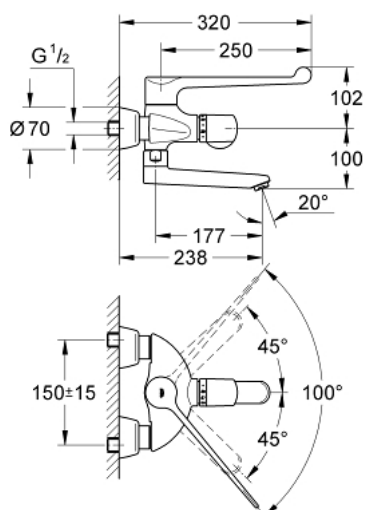


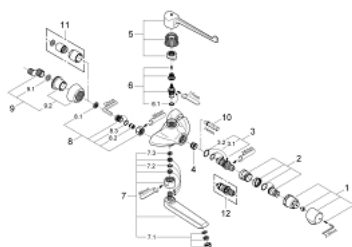
34 018 000 GROHTHERM ERGOMIX THERMOSTAT BASIN MIXER 1/2"



PRODUCT DESCRIPTION

- Colour: chrome
- for elbow lever actuation
- wall mounted
- metal elbow lever 250 mm
- swing area 100°
- metal end stop
- ceramic headpart 1/2"
- wax thermo-element
- temperature scale handle with pre-adjustable final safety stop between 35°C and 45°C
- set-up for easy, frequent thermal disinfection
- swivelling cast spout
- flow straightener 9 l/min.
- lockable stop ring
- built-in non return valves
- dirt strainers
- projection 238 mm
- covered S-unions
- GROHE Long-Life finish

34 018 000 GROHTHERM ERGOMIX THERMOSTAT BASIN MIXER 1/2"



SPARE PARTS, May 2007 – now

- 1: Scale handle (Order-nr. 47409000)
- 2: Stop ring + regulating nut (Order-nr. 47278000)
- 3: Thermo-element 1/2" (Order-nr. 47450000)
- 3.1: O-ring $\varnothing 21 \times \varnothing 2$ (Order-nr. 0599900M)
- 3.2: O-ring $\varnothing 24 \times \varnothing 2$ (Order-nr. 0119600M)
- 4: Seat for thermostat (Order-nr. 01460000)
- 5: Lever 250 mm (Order-nr. 47410000)
- 6: Headpart 1/2" + lever handle (Order-nr. 47117000)
- 6.1: O-ring $\varnothing 18.2 \times \varnothing 1.7$ (Order-nr. 0392400M)
- 7: Cast swivel spout (Order-nr. 13138000)
- 7.1: Flow straightener (Order-nr. 13960000)
- 7.2: Sealing washer (Order-nr. 0128500M)
- 7.3: Stop limiter (Order-nr. 0974000M)
- 8: Non-return valve (Order-nr. 47189000)
- 8.1: Dirt Strainer (Order-nr. 0726400M)
- 8.2: Non-return valve (Order-nr. 08565000)
- 8.3: O-ring $\varnothing 17 \times \varnothing 2$ (Order-nr. 0305500M)
- 9: S-union (Order-nr. 12058000)
- 9.1: Ball seal dia. 9x6.8 mm (Order-nr. 0138600M)
- 9.2: Covering escutcheon (Order-nr. 45545000)
- 10: Socket spanner (Order-nr. 19070000)*
- 11: Extension set 1/2", 30 mm (Order-nr. 46238000)*
- 12: Thermo-element 1/2" (Order-nr. 47282000)*

* Optional accessories