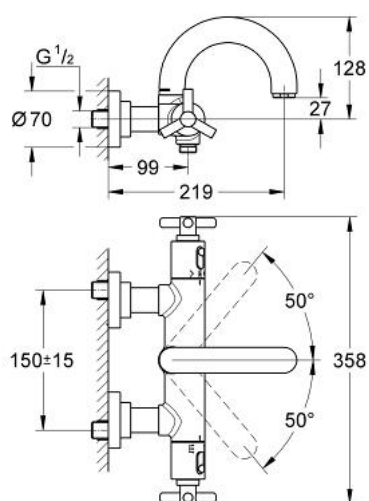


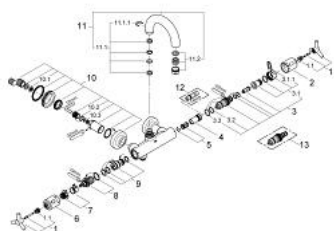
34 061 000 ATRIO THERMOSTAT BATH/SHOWER MIXER



PRODUCT DESCRIPTION

- Colour: chrome
- wall mounted
- wax thermo-element
- with inside-lying spindle
- Aquadimmer with multiple function
- - shut off and flow control
- automatic diverter: bath/shower
- temperature scale handle with SafeStop at 38°C
- with ceramic disks
- integrated non-return valves and dirt strainers
- swivelling tubular spout with Mousseur and stop limiter
- covered S-unions
- Protected against backflow
- with Ypsilon handle
- without shower set
- GROHE Water Saving - Less water, perfect flow
- GROHE Long-Life finish

34 061 000 ATRIO THERMOSTAT BATH/SHOWER MIXER



SPARE PARTS, November 2007 – now

- 1: Handle Atrio Ypsilon (Order-nr. 47289000)
- 1.1: Repl. kit f.handle fastening (Order-nr. 08943000)
- 2: Scale handle (Order-nr. 06676000)
- 3: Thermo-element 1/2" (Order-nr. 47217000)
- 3.1: Stop ring + regulating nut (Order-nr. 47300000)
- 3.1.1: Fixing clamp (Order-nr. 0574400M)
- 3.2: O-ring $\varnothing 21 \times \varnothing 2$ (Order-nr. 0599900M)
- 3.3: O-ring $\varnothing 24 \times \varnothing 2$ (Order-nr. 0119600M)
- 4: Seat for thermostat (Order-nr. 01460000)
- 5: Sound absorber (Order-nr. 47398000)
- 6: Handle for shut-off valve (Order-nr. 06654000)
- 7: Temperature limiter (Order-nr. 47669000)
- 8: Aquadimmer (Order-nr. 47364000)
- 9: Water flow (Order-nr. 47376000)
- 10: Screw joint (Order-nr. 47323000)
- 10.1: Dirt Strainer (Order-nr. 0726400M)
- 10.2: O-ring $\varnothing 17 \times \varnothing 2$ (Order-nr. 0305500M)
- 10.3: Non-return valve (Order-nr. 08565000)
- 11: Spout (Order-nr. 45601000)
- 11.1: Repl.kit f.cast spout (Order-nr. 45474000)
- 11.1.1: Safety washer (Order-nr. 0585000M)
- 11.2: Mousseur (Order-nr. 13927000)
- 12: Socket spanner (Order-nr. 19070000)*
- 13: Thermoelement for changed waterways (Order-nr. 47657000)*

* Optional accessories