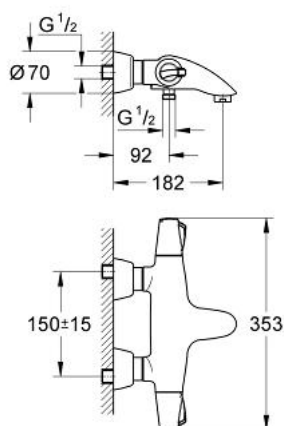


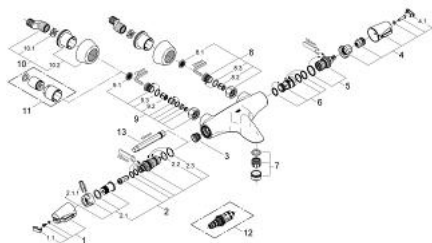
34 070 000 CHIARA THERMOSTAT BATH/SHOWER MIXER



PRODUCT DESCRIPTION

- Colour: chrome
- wall mounted
- GROHE CoolTouch safety housing
- wax-thermoelement with inside-lying spindle
- concentric casted spout
- Aquadimmer with multiple function
- - shut off and flow control
- automatic diverter: bath/shower
- Aquadimmer handle with stop ring
- ceramic discs
- temperature scale handle with SafeStop at 38°C
- shower outlet below 1/2"
- built-in non return valves
- mousseur
- covered S-unions
- dirt strainers
- Protected against backflow
- GROHE Water Saving - Less water, perfect flow
- GROHE Long-Life finish

34 070 000 CHIARA THERMOSTAT BATH/SHOWER MIXER



SPARE PARTS, August 2008 – now

- 1: Scale handle (Order-nr. 47692IP0)
- 1.1: Cap (Order-nr. 11366P0M)
- 2: Thermo-element 1/2" (Order-nr. 47217000)
- 2.1: Stop ring + regulating nut (Order-nr. 47300000)
- 2.1.1: Fixing clamp (Order-nr. 0574400M)
- 2.2: O-ring $\varnothing 21 \times \varnothing 2$ (Order-nr. 0599900M)
- 2.3: O-ring $\varnothing 24 \times \varnothing 2$ (Order-nr. 0119600M)
- 3: Seat for thermostat (Order-nr. 01460000)
- 4: Handle for shut-off valve (Order-nr. 47693IP0)
- 4.1: Cap (Order-nr. 11366P0M)
- 5: Aquadimmer (Order-nr. 12433000)
- 6: Water flow (Order-nr. 47691000)
- 7: Mousseur (Order-nr. 13927000)
- 8: Non-return valve (Order-nr. 47189000)
- 8.1: Dirt Strainer (Order-nr. 0726400M)
- 8.2: Non-return valve (Order-nr. 08565000)
- 8.3: O-ring $\varnothing 17 \times \varnothing 2$ (Order-nr. 0305500M)
- 9: Screw joint (Order-nr. 47425000)
- 9.1: Dirt Strainer (Order-nr. 0726400M)
- 9.2: Non-return valve (Order-nr. 08565000)
- 9.3: O-ring $\varnothing 17 \times \varnothing 2$ (Order-nr. 0305500M)
- 10: S-union (Order-nr. 12058000)
- 10.1: Ball seal dia. 9x6.8 mm (Order-nr. 0138600M)
- 10.2: Covering escutcheon (Order-nr. 45545000)
- 11: Extension set 1/2", 30 mm (Order-nr. 46238000)*
- 12: Thermoelement for changed waterways (Order-nr. 47657000)*
- 13: Socket spanner (Order-nr. 19070000)*

* Optional accessories