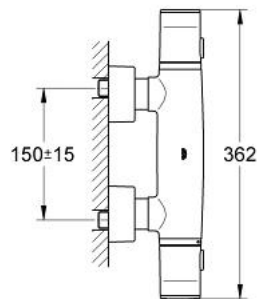
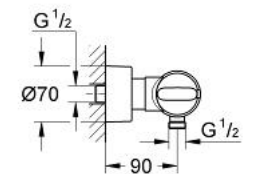


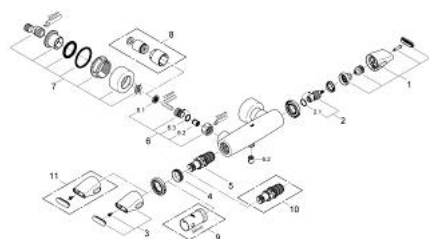
34 258 LS0 GROHE ONDUS THERMOSTAT SHOWER MIXER



PRODUCT DESCRIPTION

- Colour: moon white
- wall mounted
- GROHE Water Saving - Less water, perfect flow
- GROHE CoolTouch safety housing
- GROHE TurboStat compact cartridge with wax thermoelement
- integrated mixed water shut off
- ceramic headpart 1/2", 180°
- GROHE SafeStop at 38°C
- volume handle with EcoButton (economy button with individually adjustable economy stop)
- shower outlet below 1/2"
- dirt strainers
- covered S-unions
- Protected against backflow

34 258 LS0 GROHE ONDUS THERMOSTAT SHOWER MIXER



SPARE PARTS, October 2006 – now

- 1: Handle for shut-off valve (Order-nr. 47794LS0)
- 2: Ceramic headpart, 1/2" (Order-nr. 45346000)
- 2.1: O-ring $\varnothing 18.2 \times \varnothing 1.7$ (Order-nr. 0392400M)
- 3: Scale handle, metallic (Order-nr. 47795LS0)
- 4: Fitting ring (Order-nr. 47743000)
- 5: Thermostatic compact cartridge 1/2" (Order-nr. 47439000)
- 6: Non-return valve (Order-nr. 47189000)
- 6.1: Dirt Strainer (Order-nr. 0726400M)
- 6.2: Non-return valve (Order-nr. 08565000)
- 6.3: O-ring $\varnothing 17 \times \varnothing 2$ (Order-nr. 0305500M)
- 7: S-union (Order-nr. 12693LS0)
- 8: Extension set 1/2", 30 mm (Order-nr. 46238LS0)*
- 9: Socket spanner (Order-nr. 19332000)*
- 10: GROHE TurboStat cartridge 1/2" (Order-nr. 47175000)*
- 11: Scale handle, metallic (Order-nr. 47798LS0)*

* Optional accessories