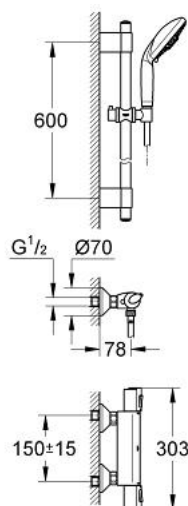


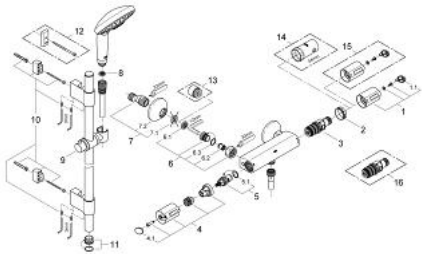
34 280 000 COMFORT SET GROHTHERM 1000



PRODUCT DESCRIPTION

- Colour: chrome
- consisting of:
 - Grotherm 1000 thermostatic shower mixer 1/2"
 - (34 143 000)
 - GROHE TurboStat compact cartridge with wax thermoelement
 - integrated mixed water shut off
 - Carbodur ceramic headpart 1/2", 180°
 - volume handle with GROHE EcoButton (economy button with individually adjustable economy stop)
 - GROHE SafeStop safety button at 38°C
- S-unions
- protected against backflow
- Rainshower Classic shower set with GROHE DreamSpray
- shower rail, 600 mm (28 797)
- GROHE FastFixation Plus (adjustable distance between wall shower holders for adaption to existing drillings)
- hand shower Classic (28 764 000)
- 3 spray patterns:
 - Rain, Jet, Pure
- SpeedClean anti-limescale system
- Silverflex shower hose 1750 mm 1/2" x 1/2" (28 388)
- TwistStop to prevent hose from twisting
- GROHE Water Saving - Less water, perfect flow
- GROHE Long-Life finish

34 280 000 COMFORT SET GROHTHERM 1000



SPARE PARTS, 10月 2007 – now

- 1: Temperature scale handle (Order-nr. 47737000)
- 1.1: Cover cap (Order-nr. 1009900M)
- 2: Fitting ring (Order-nr. 47743000)
- 3: Thermostatic compact cartridge 1/2" (Order-nr. 47439000)
- 4: Handle for shut-off valve with economy device (Order-nr. 47736000)
- 4.1: Cover cap (Order-nr. 1009900M)
- 5: Ceramic headpart 1/2" (Order-nr. 45346000)
- 5.1: O-ring Ø 18.2 x Ø 1.7 (Order-nr. 0392400M)
- 6: Non-return valve (Order-nr. 47189000)
- 6.1: Dirt strainer (Order-nr. 0726400M)
- 6.2: Non-return valve (Order-nr. 08565000)
- 6.3: O-ring ø 17 x ø 2 (Order-nr. 0305500M)
- 7: S-union (Order-nr. 12075000)
- 7.1: Seal (Order-nr. 0138600M)
- 7.2: Escutcheon (Order-nr. 0221000M)
- 8: Dirt strainer (Order-nr. 0700200M)
- 9: Glide element (Order-nr. 06765000)
- 10: Fixing set (Order-nr. 45403000)
- 11: Cover cap (Order-nr. 45922000)
- 12: Compensation disc (Order-nr. 45914VT0)*
- 13: Extension 3/4", 20 mm (Order-nr. 0713000M)*
- 14: Socket spanner (Order-nr. 19332000)*
- 15: Temperature scale handle (Order-nr. 47739000)*
- 16: GROHE TurboStat cartridge 1/2" (Order-nr. 47175000)*

* Optional accessories