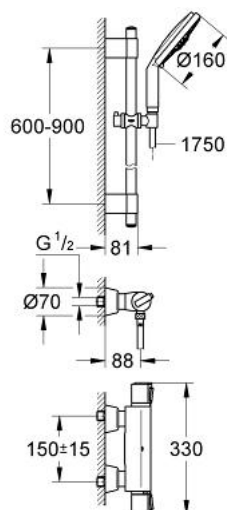


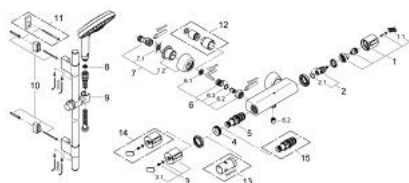
34 281 000 COMFORT SET GROHTHERM 2000



PRODUCT DESCRIPTION

- Colour: chrome
- consisting of:
 - Grotherm 2000 thermostatic shower mixer(34 169)
 - GROHE CoolTouch safety housing
 - GROHE TurboStat compact cartridge with wax thermoelement
 - integrated mixed water shut off
 - Carbodur ceramic headpart 1/2", 180°
 - volume handle with GROHE EcoButton (economy button with individually adjustable economy stop)
 - GROHE SafeStop safety button at 38°C
- covered S-unions
- protected against backflow
- Rainshower Cosmopolitan shower set with GROHE DreamSpray
- shower rail, 900 mm (28 819 001)
- GROHE FastFixation Plus (adjustable distance between wall shower holders for adaption to existing drillings)
- hand shower Cosmopolitan (28 756 000)
- 4 spray patterns:
 - Rain, Jet, Pure, Champagne spray
- SpeedClean anti-limescale system
- Silverflex shower hose 1750 mm 1/2" x 1/2" (28 388)
- TwistStop to prevent hose from twisting
- GROHE Water Saving - Less water, perfect flow
- GROHE Long-Life finish

34 281 000 COMFORT SET GROHTHERM 2000



SPARE PARTS, 10月 2007 – now

1: Handle for shut-off valve with economy device (Order-nr. 47745000)

1.1: Cover cap (Order-nr. 1007500M)

2: Ceramic headpart 1/2" (Order-nr. 45346000)

2.1: O-ring Ø 18.2 x Ø 1.7 (Order-nr. 0392400M)

3: Temperature scale handle (Order-nr. 47742000)

3.1: Cover cap (Order-nr. 1007500M)

4: Fitting ring (Order-nr. 47743000)

5: Thermostatic compact cartridge 1/2" (Order-nr. 47439000)

6: Non-return valve (Order-nr. 47189000)

6.1: Dirt strainer (Order-nr. 0726400M)

6.2: Non-return valve (Order-nr. 08565000)

6.3: O-ring ø 17 x ø 2 (Order-nr. 0305500M)

7: S-union (Order-nr. 12058000)

7.1: Seal (Order-nr. 0138600M)

7.2: Covering escutcheon (Order-nr. 45545000)

8: Dirt strainer (Order-nr. 0700200M)

9: Glide element (Order-nr. 06765000)

10: Fixing set (Order-nr. 45403000)

11: Compensation disc (Order-nr. 45914VT0)*

12: Extension set, 30 mm (Order-nr. 46238000)*

13: Socket spanner (Order-nr. 19332000)*

14: Temperature scale handle (Order-nr. 47286000)*

15: GROHE TurboStat cartridge 1/2" (Order-nr. 47175000)*

* Optional accessories