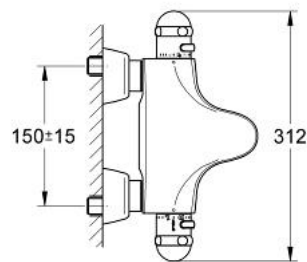
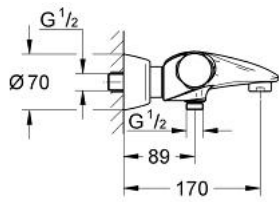


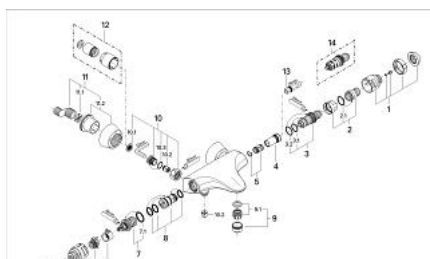
34 551 000 **SENTOSA THERMOSTATIC BATH MIXER 1/2"**



PRODUCT DESCRIPTION

- Colour: chrome
- wall mounted
- wax thermoelement
- Aquadimmer with multiple function
- flow control
- diverter: bath/shower
- ceramic discs
- mousseur
- temperature scale handle with GROHE SafeStop at 38°C
- shower bottom outlet 1/2"
- built-in non return valves
- dirt strainers
- covered S-unions
- protected against backflow
- without shower set
- GROHE Long-Life finish

34 551 000 **SENTOSA THERMOSTATIC BATH MIXER 1/2"**



SPARE PARTS, 1月 1998 – now

- 1: Temperature scale handle (Order-nr. 47422IP0)
- 2: Stop ring + regulating nut (Order-nr. 47167000)
- 2.1: Sealing washer Ø 24 x Ø 2 (Order-nr. 0119600M)
- 3: Thermo-element 1/2" (Order-nr. 47450000)
- 3.1: Sealing washer Ø 21 x Ø 2 (Order-nr. 0599900M)
- 3.2: Sealing washer Ø 24 x Ø 2 (Order-nr. 0119600M)
- 4: Seat for thermostat (Order-nr. 47399000)
- 5: Buffer (Order-nr. 47398000)
- 6: Handle for shut-off valve (Order-nr. 47469IP0)
- 7: Aquadimmer (Order-nr. 47364000)
- 7.1: Sealing washer (Order-nr. 0305600M)
- 8: Water flow (Order-nr. 47376000)
- 9: Mousseur (Order-nr. 13927000)
- 9.1: Replacement flow control M28x1 (Order-nr. 45029000)
- 10: Non-return valve (Order-nr. 47189000)
- 10.1: Dirt strainer (Order-nr. 0726400M)
- 10.2: Non-return valve (Order-nr. 08565000)
- 10.3: O-ring ø 17 x ø 2 (Order-nr. 0305500M)
- 11: S-union (Order-nr. 12058000)
- 11.1: Seal (Order-nr. 0138600M)
- 11.2: Covering escutcheon (Order-nr. 45545000)
- 12: Extension set, 30 mm (Order-nr. 46238000)*
- 13: Socket spanner (Order-nr. 19070000)*
- 14: Thermo-element 1/2 for reverse waterways (Order-nr. 47282000)*

* Optional accessories