

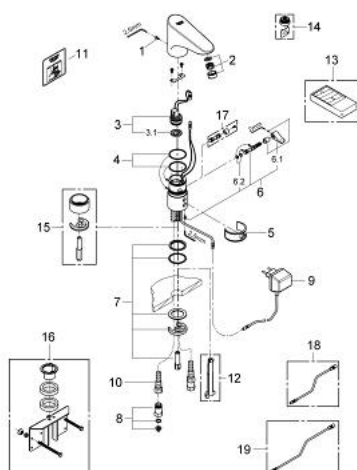
## 36 015 000 EUROPLUS E INFRARED ELECTRONIC BASIN MIXER 1/2" WITH MIXING DEVICE



### PRODUCT DESCRIPTION

- Colour: chrome
- with plug transformer 230V, 50 Hz, 3,2VA
- single hole installation
- rapid-installation-system
- safety stop after 60 sec.
- adjustable from 2 to 420 sec
- Functions to activate with remote control 36 206:
- automatic flushing after 1 or 3 days without use
- Thermal disinfection for 3,5 or 11 min
- mixing device with hot water stop-valve
- adjustable
- flow limiter 6 l/min
- flexible connection hoses
- non-return valve
- dirt strainers
- CE approved
- type of protection faucet IP 59K
- type of protection plug transformer IP 44
- noise classification 1 in accordance with DIN4109
- GROHE Water Saving - Less water, perfect flow
- GROHE Long-Life finish

## 36 015 000 EUROPLUS E INFRARED ELECTRONIC BASIN MIXER 1/2" WITH MIXING DEVICE



### SPARE PARTS, June 2008 – now

- 1: Screw (Order-nr. 4283100M)
  - 2: Mousseur (Order-nr. 42832000)
  - 3: Solenoid valve (Order-nr. 43066000)
  - 3.1: Dirt Strainer (Order-nr. 42798000)
  - 4: Seat washer (Order-nr. 4283600M)
  - 5: Cleaning clip (Order-nr. 42837000)
  - 6: Lever (Order-nr. 42839000)
  - 6.1: Mixing lever (Order-nr. 42838000)
  - 6.2: Seat washer (Order-nr. 4284000M)
  - 7: Fixing set (Order-nr. 42841000)
  - 8: Non-return valve (Order-nr. 43431000)
  - 9: Plug transformer (Order-nr. 43016000)
  - 10: Flexible connection hose, 470 (Order-nr. 45484000)
  - 11: Sticker with pictograph (Order-nr. 4217700M)
  - 12: Disassembling key  
(for Relexa Plus, Relexa Cosmopolitan face plate) (Order-nr. 19132000)\*
  - 13: Infra-red remote control (Order-nr. 36206000)\*
  - 14: Mousseur (Order-nr. 36133000)\*
  - 15: Socket (Order-nr. 36210000)\*
  - 16: Rotation lock (Order-nr. 42919000)\*
  - 17: Security cover cap (Order-nr. 36209000)\*
  - 18: Extension cable (Order-nr. 36221000)\*
  - 19: Extension cable (Order-nr. 36222000)\*
- \* Optional accessories