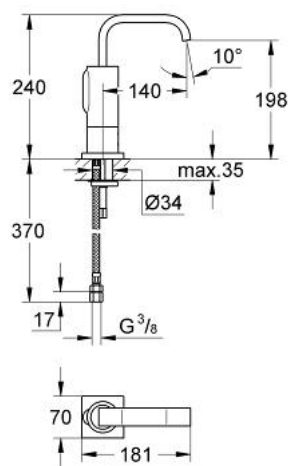


## 36 099 000 ALLURE E INFRARED ELECTRONIC BASIN MIXER 1/2" WITHOUT MIXING DEVICE

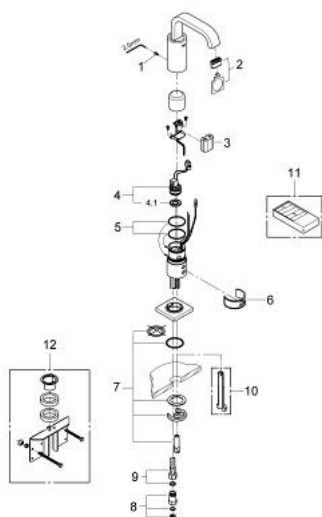


### PRODUCT DESCRIPTION

- Colour: chrome
- single hole installation
- for cold or premixed water
- GROHE Long-Life finish
- GROHE Water Saving - Less water, perfect flow
- U spout
- 6V lithium battery, type CR-P2
- multistage battery status display
- CE approved
- solenoid valve integrated in housing
- flow limiter 6 l/min
- integrated mousseur
- type of protection faucet IP 59K
- noise classification 1 in accordance with DIN4109
- flexible connecting hose
- dirt strainer
- rapid-installation-system
- Functions to activate with remote control 36 206:
- automatic flushing after 1 or 3 days without use
- Thermal disinfection for 3,5 or 11 min



## 36 099 000 ALLURE E INFRARED ELECTRONIC BASIN MIXER 1/2" WITHOUT MIXING DEVICE



### SPARE PARTS, February 2009 – now

- 1: Screw (Order-nr. 4283100M)
  - 2: Mousseur (Order-nr. 13220000)
  - 3: Battery (Order-nr. 42886000)
  - 4: Solenoid valve (Order-nr. 42229000)
  - 4.1: Dirt Strainer (Order-nr. 42798000)
  - 5: Seat washer (Order-nr. 4283600M)
  - 6: Cleaning clip (Order-nr. 42837000)
  - 7: Fixing set (Order-nr. 42841000)
  - 8: Dirt Strainer (Order-nr. 43293000)
  - 8.1: Dirt Strainer (Order-nr. 4329100M)
  - 9: Flexible connection hose, 470 (Order-nr. 45484000)
  - 10: Disassembling key  
(for Relexa Plus, Relexa Cosmopolitan face plate) (Order-nr. 19132000)\*
  - 11: Infra-red remote control (Order-nr. 36206000)\*
  - 12: Rotation lock (Order-nr. 42919000)\*
- \* Optional accessories