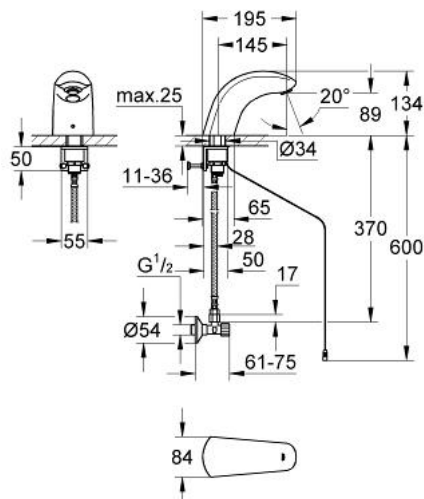


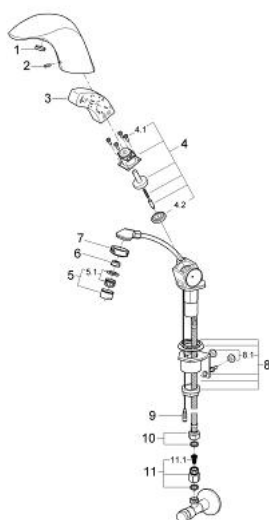
## 36 150 000 PULSOMAT SURF RADAR ELECTRONIC BASIN TAP 1/2" WITHOUT MIXING DEVICE



### PRODUCT DESCRIPTION

- Colour: chrome
- single hole installation
- tap hole diameter 35 mm
- power supply 24 V
- CE approved
- solenoid valve
- flow limiter 6 l/min
- flexible connection hose
- dirt strainer
- flow limiter
- 1 angle valve
- without power supply unit
- rotation lock
- GROHE Long-Life finish

## 36 150 000 PULSOMAT SURF RADAR ELECTRONIC BASIN TAP 1/2" WITHOUT MIXING DEVICE



### SPARE PARTS, 1月 1995 – now

- 1: Cover cap (Order-nr. 43411000)
- 2: Screw (Order-nr. 43093000)
- 3: Electronic (Order-nr. 43673000)
- 4: Magnetic coil (Order-nr. 43635000)
- 4.1: Screws (Order-nr. 4308600M)
- 4.2: Membrane (Order-nr. 43737000)
- 5: Mousseur (Order-nr. 13929000)
- 5.1: Replacement flow control M22x1 and M24x1 (Order-nr. 45002000)
- 6: Flow limiter (Order-nr. 43284000)
- 7: Threaded ring (Order-nr. 43297000)
- 8: Rotation lock (Order-nr. 43926000)
- 8.1: Washer (Order-nr. 4307700M)
- 9: Cable (Order-nr. 43698000)
- 10: Hose cold (Order-nr. 43372000)
- 11: Dirt strainer (Order-nr. 43293000)
- 11.1: Dirt strainer (Order-nr. 4329100M)