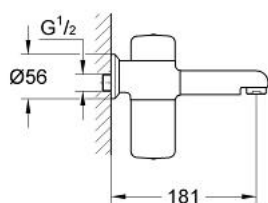


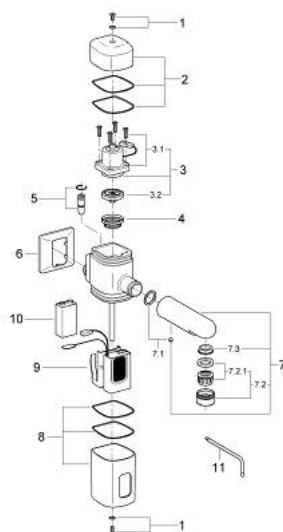
36 161 000 **PULSOACTRON INFRA-RED ELECTRONIC BASIN TAP 1/2"**
WITHOUT MIXING DEVICE



PRODUCT DESCRIPTION

- Colour: chrome
- battery supply 9 V
- CE approved
- wall mounted
- battery warning light
- solenoid valve
- stop valve
- dirt strainer
- flow limiter 6 l/min
- projection 177 - 185 mm
- depending on installation depth
- integrated 9 V battery
- type of protection IP 65
- GROHE Long-Life finish

36 161 000 PULSOACTRON INFRA-RED ELECTRONIC BASIN TAP 1/2" WITHOUT MIXING DEVICE



SPARE PARTS, 1月 1995 – now

- 1: Screw (Order-nr. 43098000)
- 2: Cap (Order-nr. 43955000)
- 3: Solenoid valve (Order-nr. 43912000)
- 3.1: Headpart for solenoid valve (Order-nr. 43695000)
- 3.2: Membrane (Order-nr. 43795000)
- 4: Dirt strainer (Order-nr. 43826000)
- 5: Supply stop (Order-nr. 43414000)
- 6: Escutcheon (Order-nr. 43245000)
- 7: Spout (Order-nr. 43357000)
- 7.1: Screw (Order-nr. 43094000)
- 7.2: Mousseur (Order-nr. 13929000)
- 7.2.1: Replacement flow control M22x1 and M24x1 (Order-nr. 45002000)
- 7.3: Flow limiter (Order-nr. 43284000)
- 8: Housing electronic (Order-nr. 43928000)
- 9: Electronic (Order-nr. 43945000)
- 10: Battery (Order-nr. 43823000)
- 11: Triangular Allen key (Order-nr. 43784000)