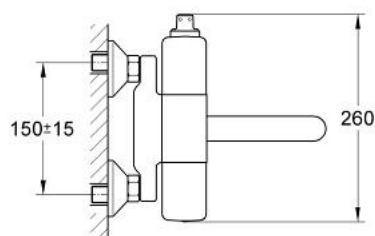
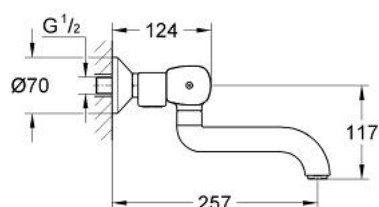


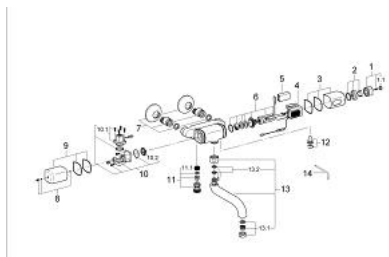
36 163 000 PULSOACTRON INFRARED ELECTRONIC BASIN MIXER 1/2" WITH MIXING DEVICE



PRODUCT DESCRIPTION

- Colour: chrome
- battery power supply 9 V
- CE approved
- wall mounted
- battery warning
- solenoid valve
- non-return valve
- dirt strainers
- temperature limiter
- swivel spout
- flow limiter 7,5 l/min
- projection 260 mm
- integrated 9V- square battery
- type of protection IP 65
- GROHE Long-Life finish

36 163 000 PULSOACTRON INFRARED ELECTRONIC BASIN MIXER 1/2" WITH MIXING DEVICE



SPARE PARTS, January 1995 – now

- 1: Scale handle (Order-nr. 42999000)
- 1.1: Cap (Order-nr. 43400000)
- 2: Escutcheon (Order-nr. 42998000)
- 3: Shield (Order-nr. 42997000)
- 4: Electronic (Order-nr. 42996000)
- 5: Battery (Order-nr. 43823000)
- 6: Cartridge (Order-nr. 42995000)
- 7: S-union (Order-nr. 42994000)
- 8: Screw dia. 4x52 mm (Order-nr. 42993000)
- 9: Shield (Order-nr. 42992000)
- 10: Solenoid valve (Order-nr. 42991000)
- 10.1: Headpart f. solenoid valve (Order-nr. 43695000)
- 10.2: Membrane (Order-nr. 43795000)
- 11: Non-return valve (Order-nr. 42990000)
- 11.1: Dirt Strainer (Order-nr. 4329600M)
- 12: Isolating valve (Order-nr. 42989000)
- 13: Spout (Order-nr. 42988000)
- 13.1: Mousseur (Order-nr. 43287000)
- 13.2: Repl. kit f. seal (Order-nr. 43806000)
- 14: Key (Order-nr. 43784000)