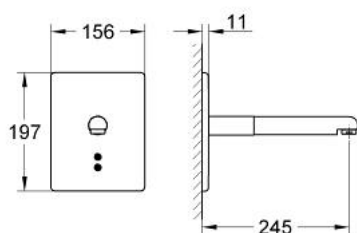


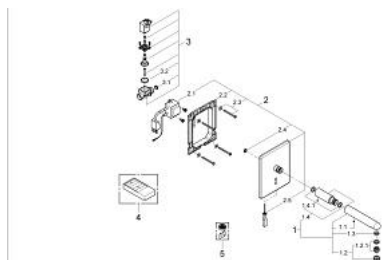
## 36 172 000 **PULSOMAT SURF INFRA-RED ELECTRONIC BASIN TAP 1/2"** **WITHOUT MIXING DEVICE**



### PRODUCT DESCRIPTION

- Colour: chrome
- set for final installation for
- 36 168
- without concealed body
- power supply 230 V/16 V
- CE approved
- power supply unit in concealed installation box
- adjustable trailing time 1-10 sec.
- solenoid valve
- dirt strainer
- front plate brass
- wall spout
- flow limiter 6 l/min
- projection 250 mm
- type of protection IP 57
- GROHE Long-Life finish

## 36 172 000 PULSOMAT SURF INFRA-RED ELECTRONIC BASIN TAP 1/2" WITHOUT MIXING DEVICE



### SPARE PARTS, 1月 2002 – now

- 1: Spout (Order-nr. 43362000)
- 1.1: Screw (Order-nr. 43094000)
- 1.2: Mousseur (Order-nr. 13929000)
- 1.2.1: Replacement flow control M22x1 and M24x1 (Order-nr. 45002000)
- 1.3: Flow limiter (Order-nr. 43284000)
- 1.4: Extension (Order-nr. 43345000)
- 1.4.1: Screw (Order-nr. 43094000)
- 2: Replace kit for electronic (Order-nr. 42693000)
- 2.1: Transformer (Order-nr. 42735000)
- 2.2: Mounting frame (Order-nr. 42736000)
- 2.3: Fixing set (Order-nr. 43095000)
- 2.4: Seal (Order-nr. 4269700M)
- 2.5: Screw driver (Order-nr. 42724000)
- 3: Solenoid valve (Order-nr. 43829000)
- 3.1: Dirt strainer (Order-nr. 4365500M)
- 3.2: Membrane (Order-nr. 43809000)
- 4: Infra-red remote control (Order-nr. 36206000)\*
- 5: Laminar flow straightener (Order-nr. 1395800M)\*

\* Optional accessories