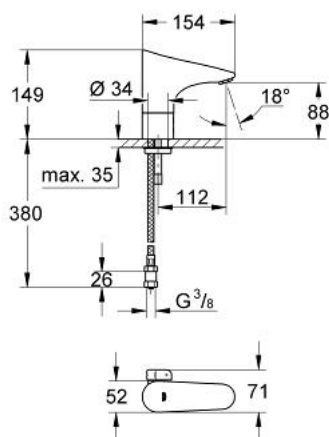


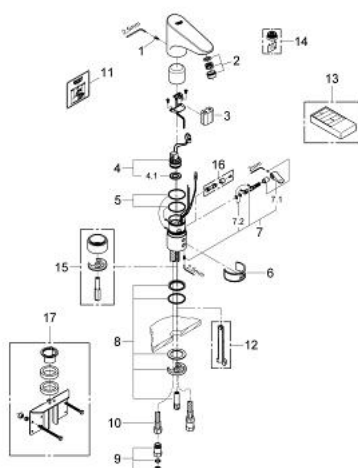
36 207 000 EUROPLUS E INFRARED ELECTRONIC BASIN MIXER 1/2" WITH MIXING DEVICE



PRODUCT DESCRIPTION

- Colour: chrome
- battery power supply
- 6V lithium battery, type CR-P2
- CE approved
- single hole installation
- multistage battery status display
- safety shutdown circuit
- Functions to activate with remote control 36 206:
- automatic flushing after 1 or 3 days without use
- Thermal disinfection for 3,5 or 11 min
- flow limiter 6 l/min
- mixing device with hot water stop-valve
- 2 flexible connection hoses
- dirt strainer
- non-return valve
- type of protection faucet IP 59K
- solenoid valve integrated in housing
- noise classification 1 in accordance with DIN4109
- GROHE Water Saving - Less water, perfect flow
- GROHE Long-Life finish

36 207 000 EUROPLUS E INFRARED ELECTRONIC BASIN MIXER 1/2" WITH MIXING DEVICE



SPARE PARTS, June 2008 – now

- 1: Screw (Order-nr. 4283100M)
- 2: Mousseur (Order-nr. 42832000)
- 3: Battery (Order-nr. 42886000)
- 4: Solenoid valve (Order-nr. 42229000)
- 4.1: Dirt Strainer (Order-nr. 42798000)
- 5: Seat washer (Order-nr. 4283600M)
- 6: Cleaning clip (Order-nr. 42837000)
- 7: Lever (Order-nr. 42839000)
- 7.1: Mixing lever (Order-nr. 42838000)
- 7.2: Seat washer (Order-nr. 4284000M)
- 8: Fixing set (Order-nr. 42841000)
- 9: Non-return valve (Order-nr. 43431000)
- 10: Flexible connection hose, 470 (Order-nr. 45484000)
- 11: Sticker with pictograph (Order-nr. 4217700M)
- 12: Disassembling key
(for Relexa Plus, Relexa Cosmopolitan face plate) (Order-nr. 19132000)*
- 13: Infra-red remote control (Order-nr. 36206000)*
- 14: Mousseur (Order-nr. 36133000)*
- 15: Socket (Order-nr. 36210000)*
- 16: Security cover cap (Order-nr. 36209000)*
- 17: Rotation lock (Order-nr. 42919000)*

* Optional accessories