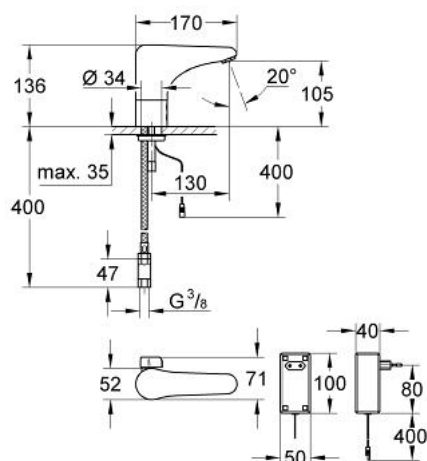


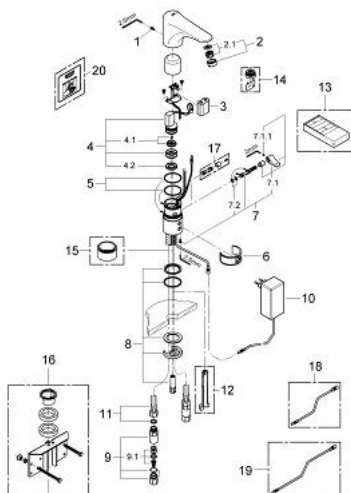
36 218 000 TECTRON INFRARED ELECTRONIC BASIN MIXER 1/2" WITH MIXING DEVICE



PRODUCT DESCRIPTION

- Colour: chrome
- power supply unit - electric power supply
- CE approved
- single hole installation
- safety shutdown circuit
- flow limiter 6 l/min
- mixing device with hot water stop-valve
- 2 flexible connection hoses
- dirt strainer
- non-return valve
- power supply unit for plug and socket connection
- type of protection faucet IP 59K
- solenoid valve integrated in housing
- noise classification 1 in accordance with DIN4109
- GROHE Long-Life finish

36 218 000 TECTRON INFRARED ELECTRONIC BASIN MIXER 1/2" WITH MIXING DEVICE



SPARE PARTS, January 1999 – now

- 1: Screw (Order-nr. 4283100M)
- 2: Mousseur (Order-nr. 42832000)
- 2.1: Strainer (Order-nr. 42833000)
- 3: Battery (Order-nr. 42886000)
- 4: Solenoid valve (Order-nr. 42892000)
- 4.1: Membrane (Order-nr. 42835000)
- 4.2: Dirt Strainer (Order-nr. 42798000)
- 5: Seat washer (Order-nr. 4283600M)
- 6: Cleaning clip (Order-nr. 42837000)
- 7: Lever (Order-nr. 42839000)
- 7.1: Mixing lever (Order-nr. 42838000)
- 7.2: Seat washer (Order-nr. 4284000M)
- 8: Fixing set (Order-nr. 42841000)
- 9: Non-return valve (Order-nr. 43431000)
- 9.1: Non-return valve (Order-nr. 42842000)
- 10: Mains adaptor for 36 232/36 233 (Order-nr. 36220000)
- 11: Flexible connection hose, 470 (Order-nr. 45484000)
- 12: Disassembling key
(for Relexa Plus, Relexa Cosmopolitan face plate) (Order-nr. 19132000)*
- 13: Infra-red remote control (Order-nr. 36206000)*
- 14: Mousseur (Order-nr. 36133000)*
- 15: Socket (Order-nr. 36210000)*
- 16: Rotation lock (Order-nr. 42919000)*
- 17: Security cover cap (Order-nr. 36209000)*
- 18: Extension cable (Order-nr. 36221000)*
- 19: Extension cable (Order-nr. 36222000)*
- 20: Sticker with pictograph (Order-nr. 4217700M)*

* Optional accessories