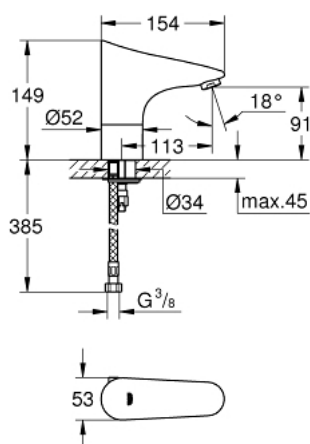


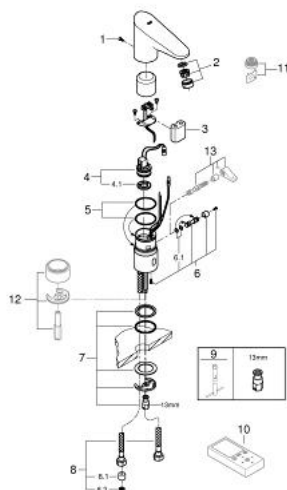
## 36 232 001 EUROPLUS E INFRA-RED ELECTRONIC BASIN TAP 1/2" WITH HIDDEN MIXING DEVICE



### PRODUCT DESCRIPTION

- Colour: chrome
- 6V lithium battery, type CR-P2
- CE approved
- single hole installation
- battery lifetime: approx. 7 years (150 actuations a day)
- GROHE Long-Life battery electronic
- 7 pre-set programs:
  - with 24/72 hours autoflush
  - time or user dependent
  - with cleaning mode
  - safety stop after 60 sec.
- additional functions by remote control:
  - adjustable flow time
  - adjustable reflection range by remote
- activation of thermal disinfection for 3.5 or 11 min by hand
- multistage battery status display
- GROHE Water Saving mousseur 5.7 l/min
- solenoid valve
- hidden mixing device with adjustable hot water limiter
- 2 flexible connection hoses
- dirt strainers
- non-return valve
- rapid-installation-system
- type of protection faucet IP 59K
- noise classification 1 in accordance with DIN4109
- GROHE Water Saving - Less water, perfect flow
- GROHE Long-Life finish

## 36 232 001 EUROPLUS E INFRA-RED ELECTRONIC BASIN TAP 1/2" WITH HIDDEN MIXING DEVICE



### SPARE PARTS, June 2016 – now

- 1: Screw (Order-nr. 4283100M)
  - 2: Mousseur (Order-nr. 42832000)
  - 3: Battery (Order-nr. 42886000)
  - 4: Solenoid valve (Order-nr. 42229000)
  - 4.1: Dirt Strainer (Order-nr. 42798000)
  - 5: Seat washer (Order-nr. 4283600M)
  - 6: Security cover cap (Order-nr. 36209000)
  - 6.1: Seat washer (Order-nr. 4284000M)
  - 7: Fixing set (Order-nr. 42841000)
  - 8: Non-return valve (Order-nr. 4240400M)
  - 9: Filter (Order-nr. 4241300M)
  - 10: Mounting wrench (Order-nr. 19017000)\*
  - 11: Infra-red remote control (Order-nr. 36206000)\*
  - 12: Mousseur (Order-nr. 36133000)\*
  - 13: Socket (Order-nr. 36210000)\*
  - 14: Lever (Order-nr. 42839000)\*
- \* Optional accessories