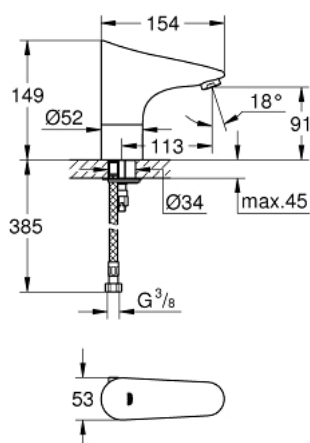


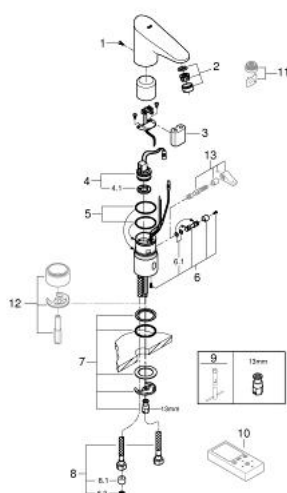
## 36 232 001 EUROPLUS E INFRA-RED ELECTRONIC BASIN TAP 1/2" WITH HIDDEN MIXING DEVICE



### PRODUCT DESCRIPTION

- Colour: chrome
- 6 V lithium battery, type CR-P2
- CE approved
- single hole installation
- battery lifetime: approx. 7 years (150 actuations a day)
- GROHE Long-Life battery electronic
- 7 pre-set programs:
- with 24/72 hours autoflush
- time or user dependent
- with cleaning mode
- safety stop after 60 sec.
- additional functions by remote control:
- adjustable flow time
- adjustable reflection range by remote
- activation of thermal disinfection for 3.5 or 11 min by hand
- multistage battery status display
- GROHE Water Saving mousseur 5.7 l/min
- solenoid valve
- hidden mixing device with adjustable hot water limiter
- 2 flexible hoses
- dirt strainers
- non return valve
- rapid installation system
- type of protection faucet IP 59K
- noise classification I in accordance with DIN 4109
- GROHE Water Saving - Less water, perfect flow
- GROHE Long-Life finish

## 36 232 001 EUROPLUS E INFRA-RED ELECTRONIC BASIN TAP 1/2" WITH HIDDEN MIXING DEVICE



### SPARE PARTS, 6月 2016 – now

- 1: Screws (Order-nr. 4283100M)
- 2: Mousseur (Order-nr. 42832000)
- 3: Battery (Order-nr. 42886000)
- 4: Solenoid valve (Order-nr. 42229000)
- 4.1: Dirt strainer (Order-nr. 42798000)
- 5: Sealing washer (Order-nr. 4283600M)
- 6: Hidden mixing device (Order-nr. 36209000)
- 6.1: Sealing washer (Order-nr. 4284000M)
- 7: Fixing set (Order-nr. 42841000)
- 8: Non-return valve (Order-nr. 4240400M)
- 9: Filter (Order-nr. 4241300M)
- 10: Mounting wrench (Order-nr. 19017000)\*
- 11: Infra-red remote control (Order-nr. 36206000)\*
- 12: Mousseur (Order-nr. 36133000)\*
- 13: Socket (Order-nr. 36210000)\*
- 14: Mixer spindle with lever (Order-nr. 42839000)\*

\* Optional accessories