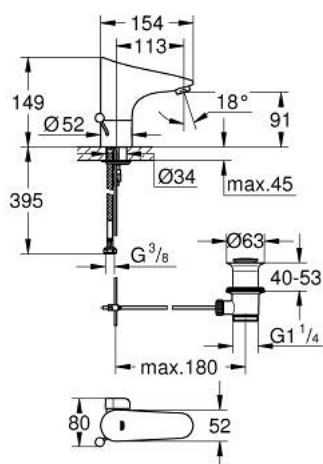


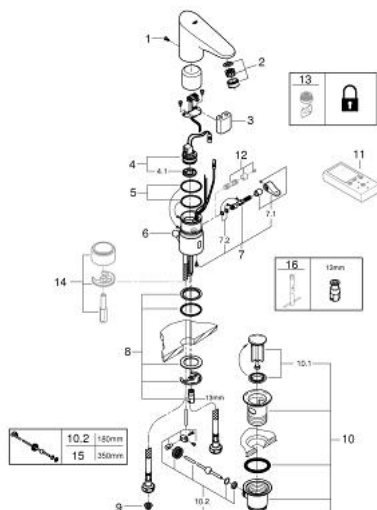
36 236 001 EUROPLUS E INFRA-RED ELECTRONIC BASIN MIXER 1/2" WITH MIXING DEVICE, ADJUSTABLE TEMPERATURE LIMITER AND WASTE SET



PRODUCT DESCRIPTION

- Colour: chrome
- with infrared sensor for bi-directional communication for monitoring, configuration and servicing
- 6V lithium battery, type CR-P2
- battery lifetime: approx. 7 years (150 actuations a day)
- GROHE Water Saving mousseur 5.7 l/min
- pop-up waste set 1 1/4"
- flexible connection hoses
- non-return valve
- dirt strainers
- solenoid valve
- rapid-installation-system
- multistage battery status display
- 7 pre-set programs:
 - auto flush
 - thermal disinfection
 - cleaning mode
- additional functions and precise settings by remote control 36 407
- CE approved
- noise classification 1 in accordance with DIN4109
- type of protection faucet IP 59K

36 236 001 EUROPLUS E INFRA-RED ELECTRONIC BASIN MIXER 1/2" WITH MIXING DEVICE, ADJUSTABLE TEMPERATURE LIMITER AND WASTE SET



SPARE PARTS, June 2016 – now

- 1: Screw (Order-nr. 4283100M)
- 2: Mousseur (Order-nr. 48159000)
- 3: Battery (Order-nr. 42886000)
- 4: Solenoid valve (Order-nr. 42229000)
- 4.1: Dirt Strainer (Order-nr. 42798000)
- 5: Seat washer (Order-nr. 4283600M)
- 6: Pop-up rod (Order-nr. 42707000)
- 7: Lever (Order-nr. 42839000)
- 7.1: Mixing lever (Order-nr. 42838000)
- 7.2: Seat washer (Order-nr. 4284000M)
- 8: Fixing set (Order-nr. 42841000)
- 9: Filter (Order-nr. 4241300M)
- 10: Pop-up waste set 1 1/4" (Order-nr. 28910000)
- 10.1: Plug (Order-nr. 07182000)
- 10.2: Eccentric rod (Order-nr. 07052000)
- 11: Remote control (Order-nr. 36407001)*
- 13: Mousseur (Order-nr. 36133000)*
- 14: Socket (Order-nr. 36210000)*
- 15: Eccentric rod (Order-nr. 07341000)*
- 16: Mounting wrench (Order-nr. 19017000)*

* Optional accessories