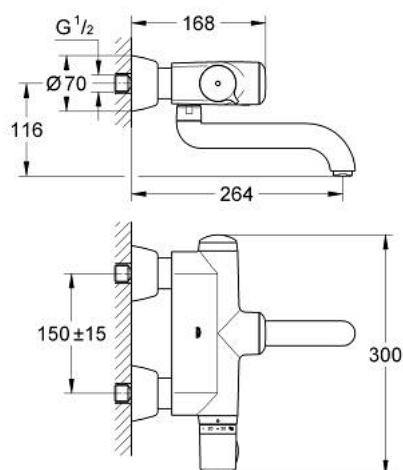


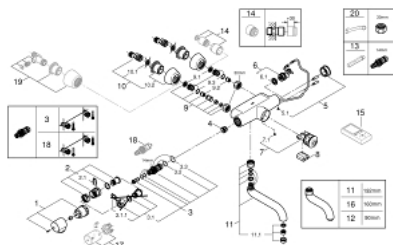
36 239 001 EUROPLUS E INFRARED ELECTRONIC WASH BASIN THERMOSTAT, 1/2"



PRODUCT DESCRIPTION

- Colour: chrome
- with infrared sensor for bi-directional communication for monitoring, configuration and servicing
- wall mounted
- 6V lithium battery, type CR-P2
- battery lifetime: approx. 7 years (150 actuations a day)
- 3 modes to start mixer: hand-hand, hand-body or body-body reflection
- temperature scale handle with safety stop between 35°C and 45°C
- flow straightener 9 l/min.
- non-return valve
- dirt strainers
- swivelling cast spout
- 192 mm
- projection 264 mm
- swivel range stop at 130°, lockable
- multistage battery status display
- 7 pre-set programs:
 - auto flush
 - thermal disinfection
 - cleaning mode
- additional functions and precise settings by remote control 36 407
- CE approved
- noise classification 1 in accordance with DIN4109
- type of protection IP 69K (planned)
- minimum pressure 1,0 bar

36 239 001 EUROPLUS E INFRARED ELECTRONIC WASH BASIN THERMOSTAT, 1/2"



SPARE PARTS, September 2015 – now

- 1: Scale handle (Order-nr. 47409000)
- 2: Stop ring (Order-nr. 47641000)
- 2.1: Fixing clamp (Order-nr. 0574400M)
- 3: Thermo-element 1/2" (Order-nr. 47217000)
- 3.1: Stop ring + regulating nut (Order-nr. 47300000)
- 3.1.1: Fixing clamp (Order-nr. 0574400M)
- 3.2: O-ring $\varnothing 21 \times \varnothing 2$ (Order-nr. 0599900M)
- 3.3: O-ring $\varnothing 24 \times \varnothing 2$ (Order-nr. 0119600M)
- 4: Seat for thermostat (Order-nr. 01460000)
- 5: Shield (Order-nr. 43384000)
- 5.1: Screw dia. 4x52 mm (Order-nr. 4346200M)
- 6: Solenoid valve (Order-nr. 42323000)
- 6.1: Dirt Strainer (Order-nr. 42798000)
- 7: Cartridge (Order-nr. 42130000)
- 7.1: Screw dia. 4x52 mm (Order-nr. 4346200M)
- 8: Battery (Order-nr. 42886000)
- 9: Screw joint (Order-nr. 47643000)
- 9.1: Dirt Strainer (Order-nr. 0726400M)
- 9.2: Non-return valve (Order-nr. 08565000)
- 9.3: O-ring $\varnothing 17 \times \varnothing 2$ (Order-nr. 0305500M)
- 10: S-union (Order-nr. 12058000)
- 10.1: Ball seal dia. 9x6.8 mm (Order-nr. 0138600M)
- 10.2: Covering escutcheon (Order-nr. 45545000)
- 11: Spout for Europlus E thermostat (Order-nr. 42132000)
- 11.1: Flow straightener (Order-nr. 13960000)
- 12: Spout for Europlus E thermostat (Order-nr. 43957000)*
- 13: Socket spanner (Order-nr. 19070000)*
- 14: Extension set 1/2", 30 mm (Order-nr. 46238000)*
- 15: Remote control for all GROHE infra-red products (Order-nr. 36407000)*
- 16: Spout for Europlus E thermostat (Order-nr. 42133000)*
- 17: Metal handle temperature control (Order-nr. 47763000)*
- 18: Thermoelement for changed waterways (Order-nr. 47657000)*
- 19: S-union (Order-nr. 12051000)*
- 20: Special spanner (Order-nr. 19377000)*

* Optional accessories