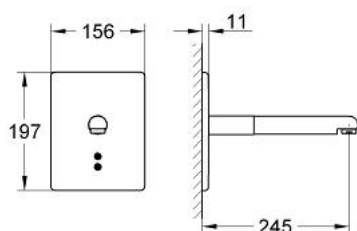


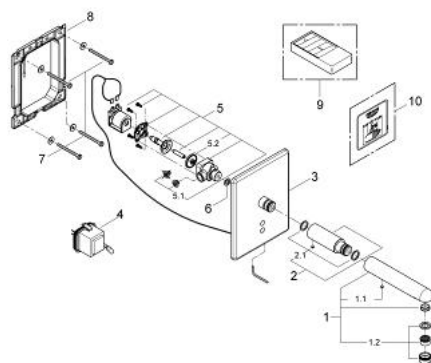
## 36 242 SD0 EUROPLUS E INFRA-RED ELECTRONIC BASIN MIXER 1/2"



### PRODUCT DESCRIPTION

- Colour: stainless steel
- set for final installation for concealed fitting box
- 36 009
- 36 241
- IR-electronic with detection in the handwashing area
- automatic safety stop after 60 sec. (factory set)
- transformer 230 V AC/12 AC (supply voltage to control)
- touch free cleaning mode for 3 minutes
- functions to activate with remote control 36 206 000:
- automatic flushing after 1 or 3 days without use
- activation of permanent run for thermal disinfection for 3.5 or 11 min
- stainless steel escutcheon
- stainless steel spout 245 mm
- laminar flow straightener 9 l/min
- type of protection IP 54
- noise classification I in accordance with DIN 4109
- CE approved
- GROHE Water Saving - Less water, perfect flow
- without concealed body

## 36 242 SD0 EUROPLUS E INFRA-RED ELECTRONIC BASIN MIXER 1/2"



### SPARE PARTS, 1月 2009 – now

- 1: Spout (Order-nr. 42121SD0)
- 1.1: Screw (Order-nr. 43094000)
- 1.2: Laminar flow straightener (Order-nr. 13960000)
- 2: Outlet extension (Order-nr. 42126SD0)
- 2.1: Screw (Order-nr. 43094000)
- 3: Cover plate Europlus E incl. electronic (Order-nr. 42122SD0)
- 4: Transformer (Order-nr. 42278000)
- 5: Solenoid valve (Order-nr. 42123000)
- 5.1: Dirt strainer (Order-nr. 4215200M)
- 5.2: Membrane (Order-nr. 43809000)
- 6: Fibre seal Ø 18,5 x Ø 12 x 2 (Order-nr. 0138900M)
- 7: Fixing set (Order-nr. 4308500M)
- 8: Mounting frame (Order-nr. 42736000)
- 9: Infra-red remote control (Order-nr. 36206000)\*
- 10: Sticker with pictograph (Order-nr. 4217700M)\*

\* Optional accessories