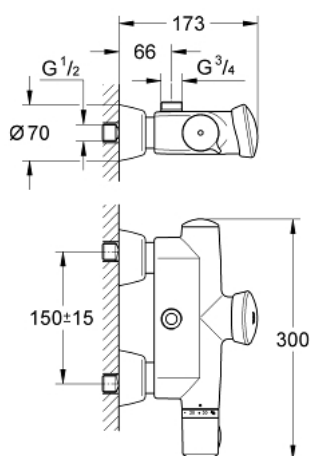


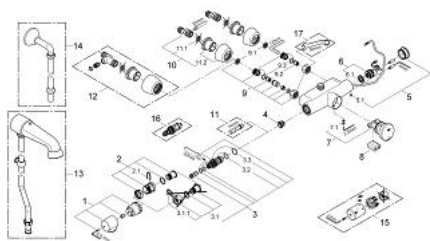
36 244 000 **EURODISC SE SELF-CLOSING SHOWER THERMOSTAT , 1/2"**



PRODUCT DESCRIPTION

- Colour: chrome
- wall mounted
- 6 V lithium battery, type CR-P2
- GROHE Long-Life finish
- GROHE TurboStat compact cartridge with wax thermoelement
- GROHE CoolTouch metal housing
- temperature scale handle with safety stop between 35°C and 45°C
- non return valve
- dirt strainers
- top outlet 3/4"
- start-stop function
- electronic control of operating time
- functions to activate with tip code
- flow time adjustable from 2 sec. to 30 min.
- automatic flushing: 5 min after 3 days without use
- activation of permanent run for thermal disinfection for 3.5 or 11 min
- CE approved
- noise classification I in accordance with DIN 4109
- type of protection IP 69K
- min. recommended pressure 1.0 bar

36 244 000 EURODISC SE SELF-CLOSING SHOWER THERMOSTAT , 1/2"



SPARE PARTS, 6月 2008 – now

- 1: Temperature scale handle (Order-nr. 47409000)
- 2: Stop ring (Order-nr. 47641000)
- 2.1: Fixing clamp (Order-nr. 0574400M)
- 3: Thermo-element 1/2" (Order-nr. 47217000)
- 3.1: Stop ring + regulating nut (Order-nr. 47300000)
- 3.1.1: Fixing clamp (Order-nr. 0574400M)
- 3.2: Sealing washer Ø 21 x Ø 2 (Order-nr. 0599900M)
- 3.3: Sealing washer Ø 24 x Ø 2 (Order-nr. 0119600M)
- 4: Seat for thermostat (Order-nr. 01460000)
- 5: Cap (Order-nr. 43384000)
- 5.1: Screw (Order-nr. 4346200M)
- 6: Solenoid valve (Order-nr. 42323000)
- 6.1: Dirt strainer (Order-nr. 42798000)
- 7: Cartridge (Order-nr. 43497000)
- 7.1: Screw (Order-nr. 4346200M)
- 8: Battery (Order-nr. 42886000)
- 9: Screw connection (Order-nr. 47643000)
- 9.1: Dirt strainer (Order-nr. 0726400M)
- 9.2: Non-return valve (Order-nr. 08565000)
- 9.3: O-ring Ø 17 x Ø 2 (Order-nr. 0305500M)
- 10: S-union (Order-nr. 12058000)
- 10.1: Seal (Order-nr. 0138600M)
- 10.2: Covering escutcheon (Order-nr. 45545000)
- 11: Socket spanner (Order-nr. 19070000)*
- 12: S-union, lockable (Order-nr. 12051000)*
- 13: Head shower combination (Order-nr. 36248000)*
- 14: Wall union, male 1/2" (Order-nr. 12407000)*
- 15: Metal handle temperature control (Order-nr. 47763000)*
- 16: Thermo element for reverse waterways (Order-nr. 47657000)*
- 17: Special spanner (Order-nr. 19377000)*

* Optional accessories