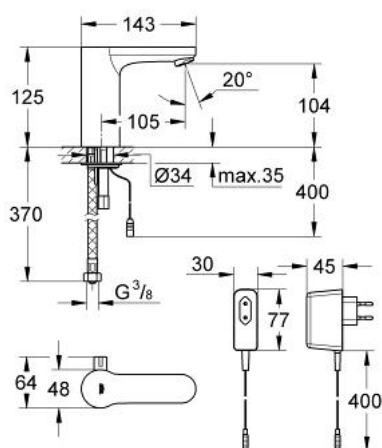


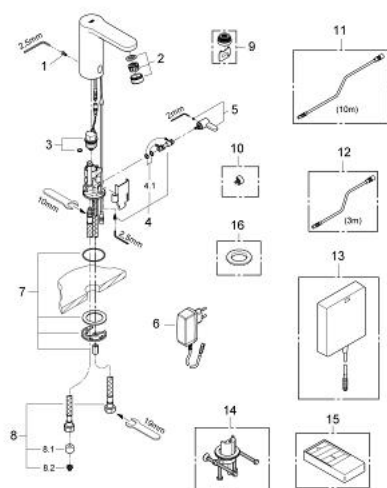
36 325 000 EUROSMART COSMOPOLITAN E INFRA-RED ELECTRONIC BASIN MIXER WITH MIXING DEVICE AND ADJUSTABLE TEMPERATURE LIMITER



PRODUCT DESCRIPTION

- Colour: chrome
- with plug transformer 100-230 V AC, 50-60 Hz, 6 V DC
- with integrated solenoid valve
- single hole installation
- mixing device with adjustable hot water limiter
- rapid-installation-system
- 7 pre-set programs:
- with 24/72 hours autoflush
- time or user dependent
- with cleaning mode
- safety stop after 60 sec.
- additional functions by remote control:
- adjustable flow time
- adjustable reflection range by remote
- activation of thermal disinfection for 3.5 or 11 min by hand
- GROHE Water Saving mousseur 5.7 l/min
- flexible connection hoses
- for cold or premixed water
- non-return valve
- dirt strainers
- noise classification 1 in accordance with DIN4109
- type of protection faucet IP 59K
- CE approved
- GROHE Water Saving - Less water, perfect flow
- GROHE Long-Life finish
- minimum pressure 1,0 bar

36 325 000 EUROSMART COSMOPOLITAN E INFRA-RED ELECTRONIC BASIN MIXER WITH MIXING DEVICE AND ADJUSTABLE TEMPERATURE LIMITER



SPARE PARTS, August 2010 – now

- 1: Screw (Order-nr. 4283100M)
- 2: Mousseur (Order-nr. 42832000)
- 3: Solenoid valve (Order-nr. 42399000)
- 4: Mixer spindle (Order-nr. 42402000)
- 4.1: Seat washer (Order-nr. 4284000M)
- 5: Mixing lever (Order-nr. 42401000)
- 5.1: Seat washer (Order-nr. 4284000M)
- 6: Mains adaptor (Order-nr. 42388000)
- 7: Mounting set (Order-nr. 42400000)
- 8: Connection hose (Order-nr. 42403000)
- 8.1: Non-return valve (Order-nr. 4240400M)
- 8.2: Filter (Order-nr. 4241300M)
- 9: Mousseur (Order-nr. 36133000)*
- 10: Security cover cap (Order-nr. 42408000)*
- 11: Extension cable (Order-nr. 36341000)*
- 12: Extension cable (Order-nr. 36340000)*
- 13: Switch-mode power supply (Order-nr. 36338000)*
- 14: Rotation lock (Order-nr. 36276000)*
- 15: Infra-red remote control (Order-nr. 36206000)*
- 16: Escutcheon (Order-nr. 36370000)*

* Optional accessories