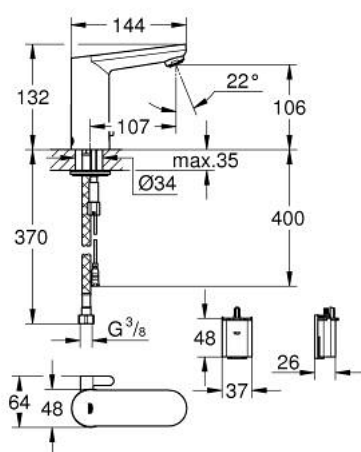


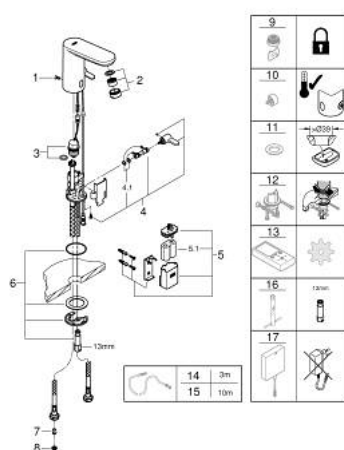
## 36 366 001 GET E INFRA-RED ELECTRONIC BASIN MIXER



### PRODUCT DESCRIPTION

- Colour: chrome
- with infrared sensor for bi-directional communication for monitoring, configuration and servicing
- single hole installation
- 6 V lithium battery, type CR-P2
- battery lifetime: approx. 7 years (150 actuations a day)
- multistage battery status display
- mixing device with adjustable hot water limiter
- with integrated solenoid valve
- external battery
- GROHE Water Saving mousseur 5.7 l/min
- dirt strainers
- flexible connection hoses
- non return valve
- rapid installation system
- 7 pre-set programs:
  - auto flush
  - thermal disinfection
  - cleaning mode
- additional functions and precise settings by remote control 36 407
- noise classification I in accordance with DIN 4109
- type of protection faucet IP 59K
- CE approved
- min. recommended pressure 1.0 bar

## 36 366 001 GET E INFRA-RED ELECTRONIC BASIN MIXER



### SPARE PARTS, 6月 2018 – now

- 1: Screws (Order-nr. 4283100M)
  - 2: Mousseur (Order-nr. 48159000)
  - 3: Solenoid valve (Order-nr. 42469000)
  - 4: Mixing lever (Order-nr. 42401000)
  - 4.1: Sealing washer (Order-nr. 4284000M)
  - 5: Battery housing (Order-nr. 42393000)
  - 5.1: Battery (Order-nr. 42886000)
  - 6: Mounting set (Order-nr. 42400000)
  - 7: Non-return valve (Order-nr. 4257200M)
  - 8: Filter (Order-nr. 4241300M)
  - 9: Mousseur (Order-nr. 36133000)\*
  - 10: Hidden mixing device (Order-nr. 42408000)\*
  - 11: Escutcheon (Order-nr. 36370000)\*
  - 12: Rotation lock (Order-nr. 36276000)\*
  - 13: Remote control (Order-nr. 36407001)\*
  - 14: Power extension cable (Order-nr. 36340000)\*
  - 15: Power extension cable (Order-nr. 36341000)\*
  - 16: Mounting wrench (Order-nr. 19017000)\*
  - 17: Switch-mode power supply (Order-nr. 36338000)\*
- \* Optional accessories