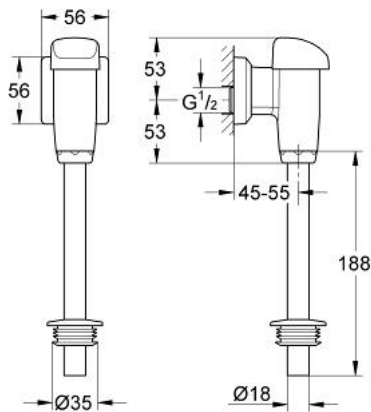


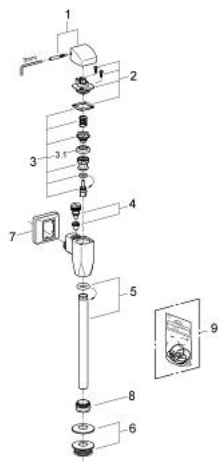
37 024 000 URINAL FLUSH VALVE



PRODUCT DESCRIPTION

- Colour: chrome
- 1/2"
- exposed installation
- heavy duty
- with control cap and short flush pipe connection
- minimum flow pressure 0.5 bar
- integrated stop valve
- flow rate adjustment
- flush volume adjustable 2.0 - 6.0 l
- material: brass
- with wall escutcheon
- flush pipe 200 mm
- rubber connector
- GROHE Long-Life finish

37 024 000 URINAL FLUSH VALVE



SPARE PARTS, 11月 2006 – now

- 1: Lever cap, complete, metal (Order-nr. 43054000)
- 2: Cover (Order-nr. 43102000)
- 3: Piston (Order-nr. 43450000)
- 3.1: Sleeve (Order-nr. 4376500M)
- 4: Supply stop (Order-nr. 43393000)
- 5: Urinal flush pipe (Order-nr. 37035000)
- 6: Adapter for urinal (Order-nr. 43818000)
- 7: Escutcheon (Order-nr. 43226000)
- 8: Fixing nut (Order-nr. 43310000)
- 9: Set of seals (Order-nr. 43715000)*

* Optional accessories