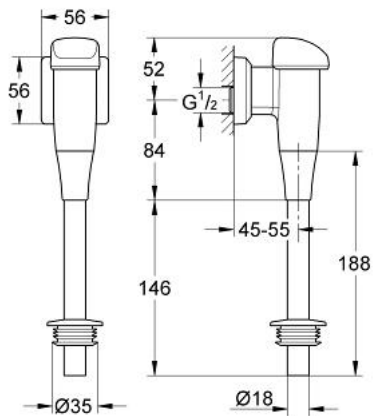


## 37 025 000 URINAL FLUSH VALVE

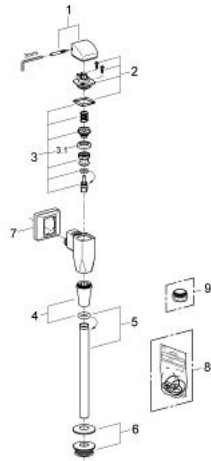


### PRODUCT DESCRIPTION

- Colour: chrome
- ½"
- exposed installation
- with control cap and flush pipe connection
- minimum flow pressure 0.5 bar
- flow rate adjustment
- flush volume adjustable 2.0 - 6.0 l
- material: brass
- with wall escutcheon
- flush pipe 200 mm
- rubber connector
- GROHE Long-Life finish



## 37 025 000 URINAL FLUSH VALVE



### SPARE PARTS, November 2006 – now

- 1: Lever cap (Order-nr. 43052000)
- 2: Cover (Order-nr. 43102000)
- 3: Piston (Order-nr. 43450000)
- 3.1: Sleeve (Order-nr. 4376500M)
- 4: Nut (Order-nr. 43304000)
- 5: Urinal flush pipe (Order-nr. 37035000)
- 6: Adapter for urinal (Order-nr. 43818000)
- 7: Escutcheon (Order-nr. 43226000)
- 8: Repl. kit f. seal (Order-nr. 43715000)\*
- 9: Fixing nut (Order-nr. 43310000)\*

\* Optional accessories