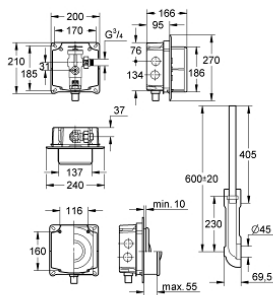


37 048 000 **FLUSH VALVE FOR WC**



PRODUCT DESCRIPTION

- concealed installation
- 3/4"
- with connection to solenoid valve
- stop valve
- 6 - 9 l adjustable
- flow pressure range from 1.2 - 5.0 bar
- with flow rate adjustment
- 2 m connecting cable
- box for concealed installation with flush elbow
- concealed flush pipe
- without electronic actuation



37 048 000 FLUSH VALVE FOR WC



SPARE PARTS, 7月 2008 – now

- 1: Hand wheel (Order-nr. 43043000)
- 2: Cover (Order-nr. 43122000)
- 3: Piston (Order-nr. 43451000)
- 3.1: Sleeve (Order-nr. 4376900M)
- 4: Supply stop (Order-nr. 43405000)
- 5: Safety valve (Order-nr. 43422000)
- 5.1: Membrane (Order-nr. 4377300M)
- 6: Operating rod (Order-nr. 43067000)
- 7: Discharge sleeve (Order-nr. 43326000)
- 8: Throttle nozzle (Order-nr. 43407000)
- 9: Relief hose (Order-nr. 42823000)
- 10: Solenoid valve (Order-nr. 42822000)
- 10.1: Dirt strainer (Order-nr. 4365500M)
- 10.2: Membrane (Order-nr. 43809000)
- 11: Set of seals (Order-nr. 43012000)*

* Optional accessories