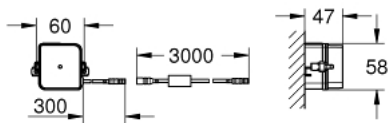
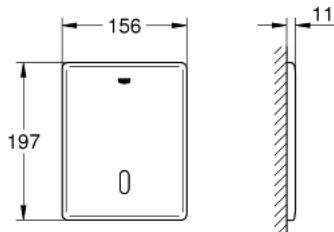


## 38 393 SD1 TECTRON SKATE INFRA-RED ELECTRONIC FOR WC FLUSH VALVE



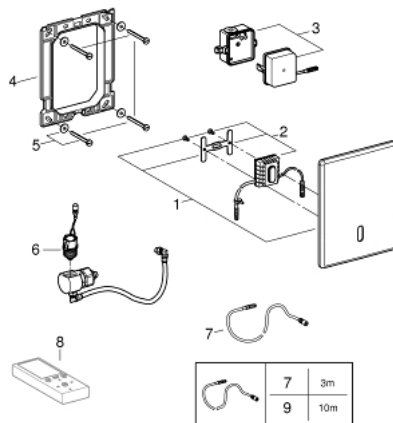
### PRODUCT DESCRIPTION

- Colour: stainless steel
- with transformer 100-230 V AC, 50-60 Hz, 6 V DC
- concealed installation
- front plate 156 x 197 mm
- infra-red control
- solenoid valve
- 7 pre-set programs:
- CE approved
- for use with concealed WC flush valve 37 048 000 and 38 519 001



## 38 393 SD1 TECTRON SKATE INFRA-RED ELECTRONIC FOR WC FLUSH VALVE

**SPARE PARTS**, March 2016 – now



- 1: Top plate (Order-nr. 42449SD0)
- 2: Electronic (Order-nr. 42455000)
- 3: Switching power supply (Order-nr. 42470000)
- 4: Frame (Order-nr. 42736000)
- 5: Fixing set (Order-nr. 4308500M)
- 6: Solenoid valve (Order-nr. 42469000)
- 7: Extension cable (Order-nr. 36221000)
- 8: Remote control (Order-nr. 36407001)\*
- 9: Extension cable (Order-nr. 36222000)\*
- \* Optional accessories