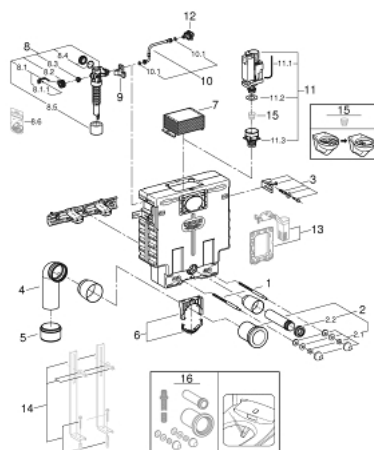


## 38 415 001 UNISET ELEMENT FOR WC, 0.82 M INSTALLATION HEIGHT

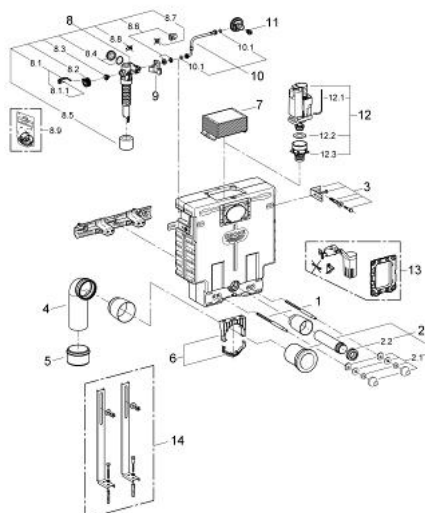


### SPARE PARTS, November 2021 – now

- 1: Threaded bolt (Order-nr. 4276400M)
- 2: WC inlet and outlet connecting set (Order-nr. 37311K00)
- 2.1: Basin fastening (Order-nr. 43511SH0)
- 2.2: Connector (Order-nr. 37119000)
- 3: Fastening set, complete, 2 pcs. (Order-nr. 4276300M)
- 4: PP-outlet bend Ø 90 mm (Order-nr. 42327000)
- 5: 4" Outlet Adaptor F Rapid SI (Order-nr. 42242000)
- 6: Support for outlet bend (Order-nr. 42243000)
- 7: inspection shaft for flushing cistern (Order-nr. 42326000)
- 8: Filling valve (Order-nr. 37095000)
- 8.1: Lever (Order-nr. 43734000)
- 8.1.1: Ball seal dia. 9x6.8 mm (Order-nr. 4377000M)
- 8.2: Valve head (Order-nr. 43536000)
- 8.3: Membrane (Order-nr. 4375800M)
- 8.4: Screw cap (Order-nr. 43735000)
- 8.5: Valve float, 5 pcs. (Order-nr. 4379100M)
- 8.6: Repl. kit f. seal (Order-nr. 43722000)\*
- 9: Support device (Order-nr. 42195000)
- 10: Overflow Sleeve (Order-nr. 43325000)
- 10.1: Seat washer (Order-nr. 0319100M)
- 11: Discharge valve AV1 complete (Order-nr. 42314000)
- 11.1: pneumatic hose (Order-nr. 42319000)
- 11.2: Ball seal dia. 9x6.8 mm (Order-nr. 42310000)
- 11.3: Valve seat for GD2 (Order-nr. 42315000)
- 12: Water connection (Order-nr. 48561000)\*
- 13: Retro-fit set (Order-nr. 38796000)\*
- 14: Support feet (Order-nr. 37304000)\*
- 15: Flow restrictor (Order-nr. 42300000)\*
- 16: Retrofit kit for shower toilets Sensia Arena and IGS (Order-nr. 40899000)\*

\* Optional accessories

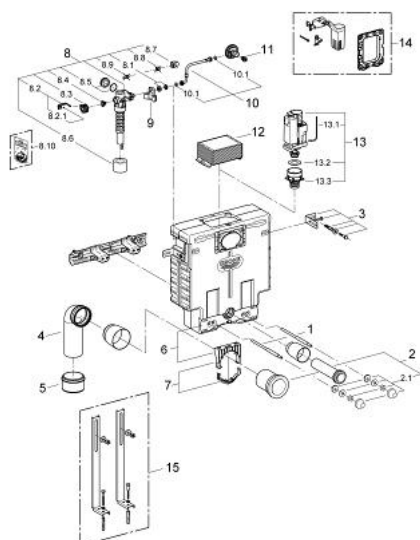
## 38 415 001 UNISET ELEMENT FOR WC, 0.82 M INSTALLATION HEIGHT



### SPARE PARTS, August 2012 – November 2021

- 1: Threaded bolt (Order-nr. 4276400M)
  - 2: WC inlet and outlet connecting set (Order-nr. 37311K00)
  - 2.1: Basin fastening (Order-nr. 43511SH0)
  - 2.2: Connector (Order-nr. 37119000)
  - 3: Fastening set, complete, 2 pcs. (Order-nr. 4276300M)
  - 4: PP-outlet bend Ø 90 mm (Order-nr. 42327000)
  - 5: 4" Outlet Adaptor F Rapid SI (Order-nr. 42242000)
  - 6: Support for outlet bend (Order-nr. 42243000)
  - 7: inspection shaft for flushing cistern (Order-nr. 42326000)
  - 8: Filling valve (Order-nr. 37095000)
  - 8.1: Lever (Order-nr. 43734000)
  - 8.1.1: Ball seal dia. 9x6.8 mm (Order-nr. 4377000M)
  - 8.2: Valve head (Order-nr. 43536000)
  - 8.3: Membrane (Order-nr. 4375800M)
  - 8.4: Screw cap (Order-nr. 43735000)
  - 8.5: Valve float, 5 pcs. (Order-nr. 4379100M)
  - 8.6: Repl. kit f. seal (Order-nr. 43722000)\*
  - 9: Support device (Order-nr. 42195000)
  - 10: Overflow Sleeve (Order-nr. 43325000)
  - 10.1: Seat washer (Order-nr. 0319100M)
  - 11: Headpart (Order-nr. 42385000)
  - 12: Discharge valve AV1 complete (Order-nr. 42314000)
  - 12.1: pneumatic hose (Order-nr. 42319000)
  - 12.2: Ball seal dia. 9x6.8 mm (Order-nr. 42310000)
  - 12.3: Valve seat for GD2 (Order-nr. 42315000)
  - 13: Retro-fit set (Order-nr. 38796000)\*
  - 14: Support feet (Order-nr. 37304000)\*
- \* Optional accessories

## 38 415 001 UNISET ELEMENT FOR WC, 0.82 M INSTALLATION HEIGHT

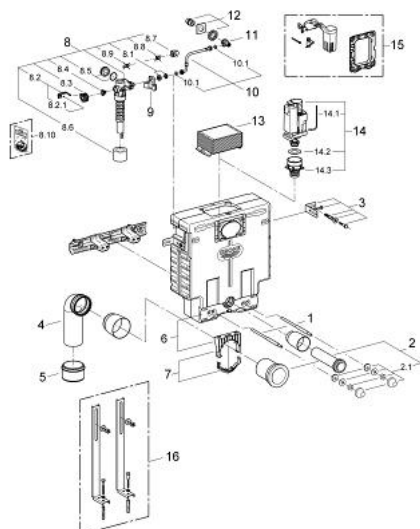


### SPARE PARTS, February 2011 – August 2012

- 1: Threaded bolt (Order-nr. 4276400M)
- 2: WC inlet and outlet connecting set (Order-nr. 37311K00)
- 2.1: Basin fastening (Order-nr. 43511SH0)
- 2.2: Connector (Order-nr. 37119000)
- 3: Fastening set, complete, 2 pcs. (Order-nr. 4276300M)
- 4: PP-outlet bend Ø 90 mm (Order-nr. 42327000)
- 5: 4" Outlet Adaptor F Rapid SI (Order-nr. 42242000)
- 6: Cap (Order-nr. 43915000)
- 7: Support for outlet bend (Order-nr. 42243000)
- 8: Filling valve (Order-nr. 37095000)
- 8.1: Lever (Order-nr. 43734000)
- 8.1.1: Ball seal dia. 9x6.8 mm (Order-nr. 4377000M)
- 8.2: Valve head (Order-nr. 43536000)
- 8.3: Membrane (Order-nr. 4375800M)
- 8.4: Screw cap (Order-nr. 43735000)
- 8.5: Valve float, 5 pcs. (Order-nr. 4379100M)
- 8.6: Repl. kit f. seal (Order-nr. 43722000)\*
- 9: Support device (Order-nr. 42195000)
- 10: Overflow Sleeve (Order-nr. 43325000)
- 10.1: Seat washer (Order-nr. 0319100M)
- 11: Headpart (Order-nr. 42385000)
- 12: inspection shaft.for flushing cistern (Order-nr. 42326000)
- 13: Discharge valve AV1 complete (Order-nr. 42314000)
- 13.1: pneumatic hose (Order-nr. 42319000)
- 13.2: Ball seal dia. 9x6.8 mm (Order-nr. 42310000)
- 13.3: Valve seat for GD2 (Order-nr. 42315000)
- 14: Retro-fit set (Order-nr. 38796000)\*
- 15: Support feet (Order-nr. 37304000)\*

\* Optional accessories

## 38 415 001 UNISET ELEMENT FOR WC, 0.82 M INSTALLATION HEIGHT



### SPARE PARTS, October 2008 – February 2011

- 1: Threaded bolt (Order-nr. 4276400M)
  - 2: WC inlet and outlet connecting set (Order-nr. 37311K00)
  - 2.1: Basin fastening (Order-nr. 43511SH0)
  - 2.2: Connector (Order-nr. 37119000)
  - 3: Fastening set, complete, 2 pcs. (Order-nr. 4276300M)
  - 4: PP-outlet bend Ø 90 mm (Order-nr. 42327000)
  - 5: 4" Outlet Adaptor F Rapid SI (Order-nr. 42242000)
  - 6: Cap (Order-nr. 43915000)
  - 7: Support for outlet bend (Order-nr. 42243000)
  - 8: Filling valve (Order-nr. 37095000)
  - 8.1: Lever (Order-nr. 43734000)
  - 8.1.1: Ball seal dia. 9x6.8 mm (Order-nr. 4377000M)
  - 8.2: Valve head (Order-nr. 43536000)
  - 8.3: Membrane (Order-nr. 4375800M)
  - 8.4: Screw cap (Order-nr. 43735000)
  - 8.5: Valve float, 5 pcs. (Order-nr. 4379100M)
  - 8.6: Repl. kit f. seal (Order-nr. 43722000)\*
  - 9: Support device (Order-nr. 42195000)
  - 10: Overflow Sleeve (Order-nr. 43325000)
  - 10.1: Seat washer (Order-nr. 0319100M)
  - 11: Service valve (Order-nr. 42235000)
  - 12: Water supply (Order-nr. 42234000)
  - 13: inspection shaft for flushing cistern (Order-nr. 42326000)
  - 14: Discharge valve AV1 complete (Order-nr. 42314000)
  - 14.1: pneumatic hose (Order-nr. 42319000)
  - 14.2: Ball seal dia. 9x6.8 mm (Order-nr. 42310000)
  - 14.3: Valve seat for GD2 (Order-nr. 42315000)
  - 15: Retro-fit set (Order-nr. 38796000)\*
  - 16: Support feet (Order-nr. 37304000)\*
- \* Optional accessories