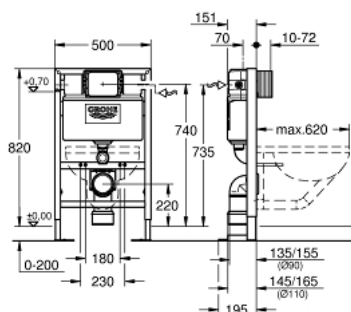


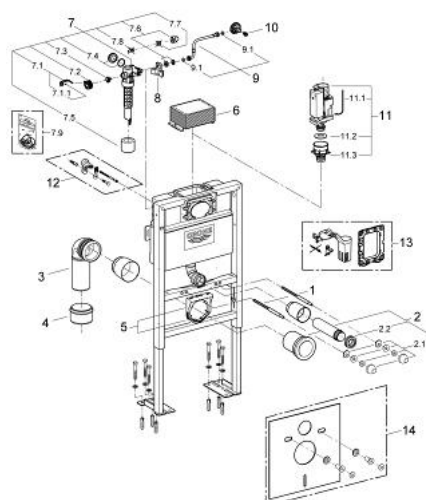
38 587 000 **RAPID SL ELEMENT FOR WC, 0.82 M INSTALLATION HEIGHT**



PRODUCT DESCRIPTION

- with flushing cistern 6 - 9 l
- for free-standing installation, for on-the-wall installations or studded walls
- powder coated steel frame, self-supporting
- for dry-cladding, completely pre-assembled
- with fixed connections
- TÜV approved
- fixing material
- 2 WC fixing bolts
- fixing device for ceramic
- distance of fixing bolts 180/230 mm
- 90° rotatable PVC outlet bend 90 mm
- depth adjustable
- reducer Ø 90/110 mm
- inlet and outlet connecting set
- flushing cistern 6 - 9 l containing the following features:
 - pneumatic discharge valve offering 3 modes of operation: dual flush or start/stop or single flush
 - front or top actuation
 - water supply from left/right or back
 - low noise (group I acc. to German Noise Specification)
 - insulated against condensation
- 1/2" water supply connection including integrated angle valve and push fit flexible hose union
- shortable inspection shaft incl. protection during construction phase
- including wall brackets 38 558 00M for on-the-wall installation
- for mounting of small flush plates please order revision shaft 40 950 000 (sold separately)

38 587 000 **RAPID SL ELEMENT FOR WC, 0.82 M INSTALLATION HEIGHT**



SPARE PARTS, 1月 2013 – now

- 1: Threaded bolt (Order-nr. 4276400M)
 - 2: WC inlet and outlet connecting set (Order-nr. 37311K00)
 - 2.1: Basin fastening (Order-nr. 43511SH0)
 - 2.2: Connector (Order-nr. 37119000)
 - 3: PP-outlet bend Ø 90 mm (Order-nr. 42327000)
 - 4: Reducer (Order-nr. 42242000)
 - 5: Support for outlet bend (Order-nr. 42243000)
 - 6: Inspection shaft for flushing cistern (Order-nr. 42326000)
 - 7: Filling valve (Order-nr. 37095000)
 - 7.1: Lever (Order-nr. 43734000)
 - 7.1.1: Seal (Order-nr. 4377000M)
 - 7.2: Valve head (Order-nr. 43536000)
 - 7.3: Membrane (Order-nr. 4375800M)
 - 7.4: Screw cap (Order-nr. 43735000)
 - 7.5: Valve float, 5 pcs. (Order-nr. 4379100M)
 - 7.6: Set of seals (Order-nr. 43722000)*
 - 8: Support device (Order-nr. 42195000)
 - 9: Overflow Sleeve (Order-nr. 43325000)
 - 9.1: Sealing washer (Order-nr. 0319100M)
 - 10: Headpart (Order-nr. 42385000)
 - 11: Discharge valve AV1 complete (Order-nr. 42314000)
 - 11.1: Pneumatic hose (Order-nr. 42319000)
 - 11.2: Seal (Order-nr. 42310000)
 - 11.3: Valve seat for GD2 (Order-nr. 42315000)
 - 12: Wall brackets (Order-nr. 3855800M)*
 - 13: Retrofit set (Order-nr. 38796000)*
 - 14: Set for noise protection (Order-nr. 37131000)*
- * Optional accessories