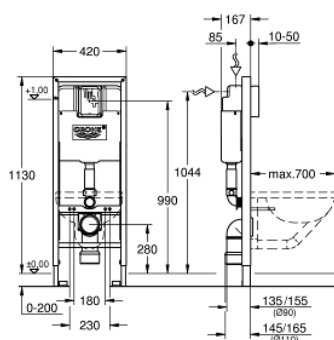


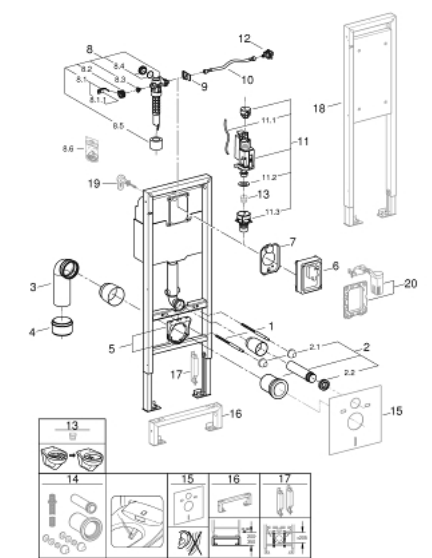
## 38 675 001 **RAPID SL ELEMENT FOR WC, 1.13 M INSTALLATION HEIGHT, 0.42 M WIDTH**



### PRODUCT DESCRIPTION

- with flushing cistern 6 l
- for WC bowls 70 cm projection
- for on-the-wall installations or studded walls
- powder coated steel frame, self-supporting
- for dry-cladding, completely pre-assembled
- with fixed connections
- fixing material
- TÜV approved
- 2 WC fixing bolts
- fixing device for ceramic
- distance of fixing bolts 180/230 mm
- outlet bend Ø 90 mm
- depth adjustable
- reducer Ø 90/110 mm
- inlet and outlet connecting set
- pneumatic discharge valve offering 3 modes of operation: dual flush or start/stop or single flush
- low noise (group I acc. to German Noise Specification)
- insulated against condensation
- 1/2" water supply connection including integrated angle valve and push fit flexible hose union
- for on-the-wall installation please order wall brackets 38 558 00M (sold separately)
- for the mounting of support rails for the disabled please order fixing element 38 559 001 (sold separately)

## 38 675 001 **RAPID SL ELEMENT FOR WC, 1.13 M INSTALLATION HEIGHT, 0.42 M WIDTH**



### SPARE PARTS, 9月 2021 – now

- 1: Threaded bolt (Order-nr. 4276400M)
- 2: WC inlet and outlet connecting set (Order-nr. 37311K00)
  - 2.1: Basin fastening (Order-nr. 43511SH0)
  - 2.2: Connector (Order-nr. 37119000)
- 3: PP-outlet bend Ø 90 mm (Order-nr. 42327000)
- 4: Reducer (Order-nr. 42242000)
- 5: Support for outlet bend (Order-nr. 42243000)
- 6: Protection cap (Order-nr. 43944000)
- 7: Protective plate (Order-nr. 43552000)
- 8: Filling valve (Order-nr. 43537000)
  - 8.1: Dummy plug and escutcheon cap (Order-nr. 37125000)
  - 8.2: Lever (Order-nr. 43734000)
    - 8.2.1: Seal (Order-nr. 4377000M)
  - 8.3: Valve head (Order-nr. 43536000)
  - 8.4: Membrane (Order-nr. 4375800M)
  - 8.5: Screw cap (Order-nr. 43735000)
  - 8.6: Valve float, 5 pcs. (Order-nr. 4379100M)
  - 8.7: Throttle (Order-nr. 42356000)
  - 8.8: Set of seals (Order-nr. 43722000)\*
- 9: Support device (Order-nr. 43551000)
- 10: Hose (Order-nr. 43349000)
- 11: Dual Flush discharge valve AV1 (Order-nr. 66558000)
  - 11.1: Pneumatic hose (Order-nr. 42319000)
  - 11.2: Seal (Order-nr. 42310000)
  - 11.3: Valve seat for GD2 (Order-nr. 42315000)
- 12: Water connection (Order-nr. 48561000)
- 13: Flow restrictor (Order-nr. 42300000)\*
- 14: Retrofit kit for shower toilets Sensia Arena and IGS (Order-nr. 40899000)\*
- 15: Set for noise protection (Order-nr. 37131000)\*
- 16: Extension (Order-nr. 38629000)\*
- 17: Accessory (Order-nr. 38779000)\*
- 18: Fixing element, 1.13 m installation height (Order-nr. 38559001)\*
- 19: Wall brackets (Order-nr. 3855800M)\*
- 20: Retrofit set (Order-nr. 38796000)\*

\* Optional accessories