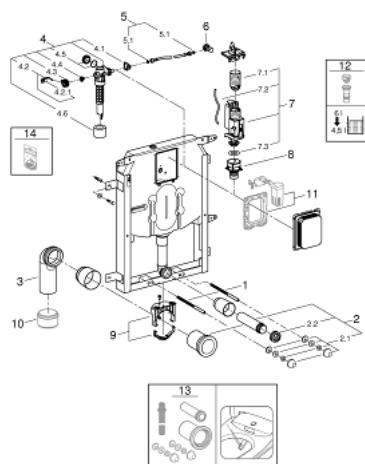


38 729 000 UNISET ELEMENT FOR WC WITH FLUSHING CISTERN 80 MM



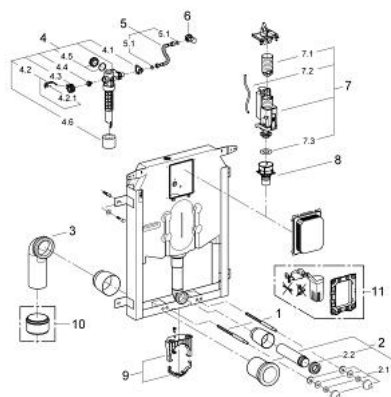
SPARE PARTS, October 2017 – now

- 1: Threaded bolt (Order-nr. 4276400M)
- 2: WC inlet and outlet connecting set (Order-nr. 37311K00)
- 2.1: Basin fastening (Order-nr. 43511SH0)
- 2.2: Connector (Order-nr. 37119000)
- 3: Outlet bend 90 mm/90 mm (Order-nr. 42280000)
- 4: Filling valve (Order-nr. 43991000)
- 4.1: Valve Support (Order-nr. 43995000)
- 4.2: Lever (Order-nr. 43734000)
- 4.2.1: Ball seal dia. 9x6.8 mm (Order-nr. 4377000M)
- 4.3: Valve head (Order-nr. 43536000)
- 4.4: Membrane (Order-nr. 4375800M)
- 4.5: Screw cap (Order-nr. 43735000)
- 4.6: Valve float, 5 pcs. (Order-nr. 4379100M)
- 5: Tube (Order-nr. 42233000)
- 5.1: Seat washer (Order-nr. 0319100M)
- 6: Service valve (Order-nr. 42343000)
- 7: Dual Flush discharge valve AV1 (Order-nr. 42320000)
- 7.1: Extension for overflow pipe (Order-nr. 42313000)
- 7.2: pneumatic hose (Order-nr. 42319000)
- 7.3: Ball seal dia. 9x6.8 mm (Order-nr. 42310000)
- 8: Valve seat for GD2 (Order-nr. 42315000)
- 9: Support for outlet bend (Order-nr. 42243000)
- 10: 4" Outlet Adaptor F Rapid SI (Order-nr. 42242000)*
- 11: Retro-fit set (Order-nr. 38796000)*
- 12: 4,5 l Adapter for GD2 (Order-nr. 42333000)*
- 13: Retrofit kit for shower toilets Sensia Arena and IGS (Order-nr. 40899000)*
- 14: Repl. kit f. seal (Order-nr. 43722000)*

* Optional accessories

38 729 000 UNISET ELEMENT FOR WC WITH FLUSHING CISTERN 80 MM

SPARE PARTS, March 2013 – October 2017

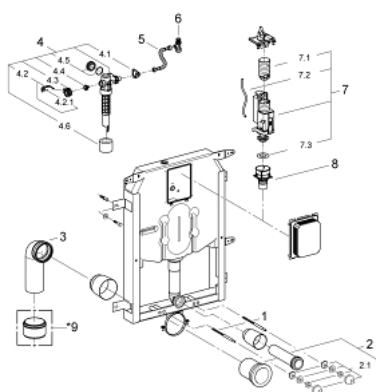


- 1: Threaded bolt (Order-nr. 4276400M)
- 2: WC inlet and outlet connecting set (Order-nr. 37311K00)
- 2.1: Basin fastening (Order-nr. 43511SH0)
- 2.2: Connector (Order-nr. 37119000)
- 3: Outlet bend 90 mm/90 mm (Order-nr. 42280000)
- 4: Filling valve (Order-nr. 43991000)
- 4.1: Valve Support (Order-nr. 43995000)
- 4.2: Lever (Order-nr. 43734000)
- 4.2.1: Ball seal dia. 9x6.8 mm (Order-nr. 4377000M)
- 4.3: Valve head (Order-nr. 43536000)
- 4.4: Membrane (Order-nr. 4375800M)
- 4.5: Screw cap (Order-nr. 43735000)
- 4.6: Valve float, 5 pcs. (Order-nr. 4379100M)
- 5: Tube (Order-nr. 42233000)
- 5.1: Seat washer (Order-nr. 0319100M)
- 6: Service valve (Order-nr. 42343000)
- 7: AV1 complete with pipe extension (Order-nr. 42320000)
- 7.1: Extension for overflow pipe (Order-nr. 42313000)
- 7.2: pneumatic hose (Order-nr. 42319000)
- 7.3: Ball seal dia. 9x6.8 mm (Order-nr. 42310000)
- 8: Valve seat for flushing cistern Italy (Order-nr. 42316000)
- 9: Support for outlet bend (Order-nr. 42243000)
- 10: 4" Outlet Adaptor F Rapid SI (Order-nr. 42242000)*
- 11: Retro-fit set (Order-nr. 38796000)*

* Optional accessories

38 729 000 UNISET ELEMENT FOR WC WITH FLUSHING CISTERN 80 MM

SPARE PARTS, June 2006 – March 2013



- 1: Threaded bolt (Order-nr. 4276400M)
- 2: WC inlet and outlet connecting set (Order-nr. 37311K00)
- 2.1: Basin fastening (Order-nr. 43511SH0)
- 2.2: Connector (Order-nr. 37119000)
- 3: Outlet bend 90 mm/90 mm (Order-nr. 42280000)
- 4: Filling valve (Order-nr. 43991000)
- 4.1: Valve Support (Order-nr. 43995000)
- 4.2: Lever (Order-nr. 43734000)
- 4.2.1: Ball seal dia. 9x6.8 mm (Order-nr. 4377000M)
- 4.3: Valve head (Order-nr. 43536000)
- 4.4: Membrane (Order-nr. 4375800M)
- 4.5: Screw cap (Order-nr. 43735000)
- 4.6: Valve float, 5 pcs. (Order-nr. 4379100M)
- 5: Tube (Order-nr. 42233000)
- 5.1: Seat washer (Order-nr. 0319100M)
- 6: Service valve (Order-nr. 42343000)
- 7: AV1 complete with pipe extension (Order-nr. 42320000)
- 7.1: Extension for overflow pipe (Order-nr. 42313000)
- 7.2: pneumatic hose (Order-nr. 42319000)
- 7.3: Ball seal dia. 9x6.8 mm (Order-nr. 42310000)
- 8: Valve seat for flushing cistern Italy (Order-nr. 42316000)
- 9: 4" Outlet Adaptor F Rapid SI (Order-nr. 42242000)*

* Optional accessories