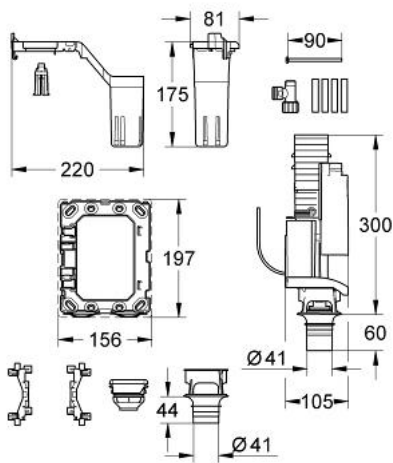


## 38 797 000 **GROHE FRESH RETROFIT SET**

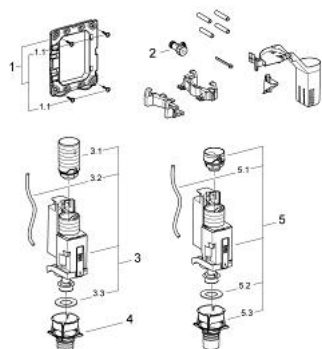


### PRODUCT DESCRIPTION

- with AV1
- for GROHE flushing cisterns with small inspection shaft
- not suitable for Skate Cosmopolitan with wood or glass or metal surface
- fixing frame with opening function
- with box for support of aromatic tabs
- for chlorine-free tabs only
- pneumatic dual flush discharge valve with valve seat
- angle valve 1/2"
- for all GROHE flush plates 156 x 197 mm



## 38 797 000 **GROHE FRESH RETROFIT SET**



### **SPARE PARTS**, 9月 2009 – now

1: Mounting frame (Order-nr. 42358000)

1.1: Screw (Order-nr. 6636200M)

2: Angle valve (Order-nr. 42730000)

3: Dual Flush discharge valve AV1 (Order-nr. 42320000)

3.1: Extension for overflow pipe (Order-nr. 42313000)

3.2: Pneumatic hose (Order-nr. 42319000)

3.3: Seal (Order-nr. 42310000)

4: Valve seat for GD2 (Order-nr. 42315000)

5: Dual Flush discharge valve AV1 (Order-nr. 66558000)

5.1: Pneumatic hose (Order-nr. 42319000)

5.2: Seal (Order-nr. 42310000)

5.3: Valve seat for GD2 (Order-nr. 42315000)