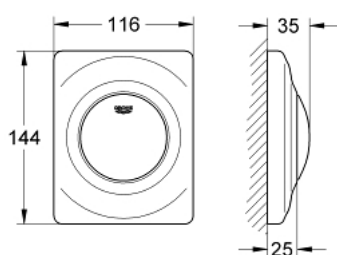


## 38 808 SP0 **SURF WALL PLATE**

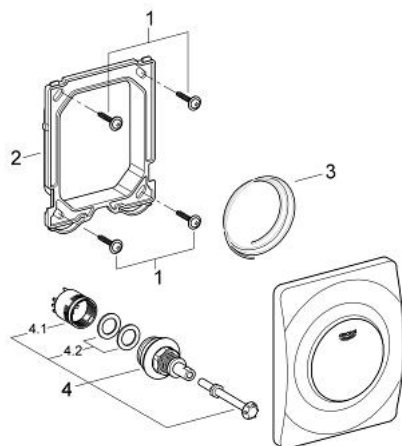


### PRODUCT DESCRIPTION

- manual activation for urinal
- set for final installation
- 116 x 144 mm
- mechanical functional cartridge
- flow pressure min 0.5 bar
- operating pressure max 6 bar
- 1.0 - 6.0 adjustable
- low noise (group II according to German noise specification)



## 38 808 SP0 **SURF WALL PLATE**



### **SPARE PARTS**, August 2012 – now

- 1: Screw dia. 4x52 mm (Order-nr. 6636200M)
- 2: Frame (Order-nr. 66845000)
- 3: Spring, 5 pcs. (Order-nr. 4309700M)
- 4: Cartridge (Order-nr. 42354000)
- 4.1: Repl. kit f. seal (Order-nr. 4271500M)
- 4.2: Rings (Order-nr. 4282000M)