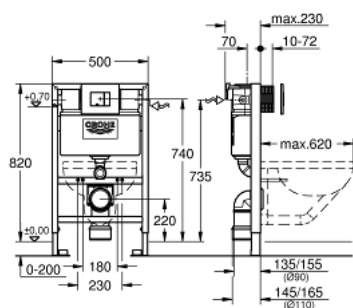


## 38 885 000 **RAPID SL 4-IN-1 SET FOR WC, 0.82 M INSTALLATION HEIGHT**

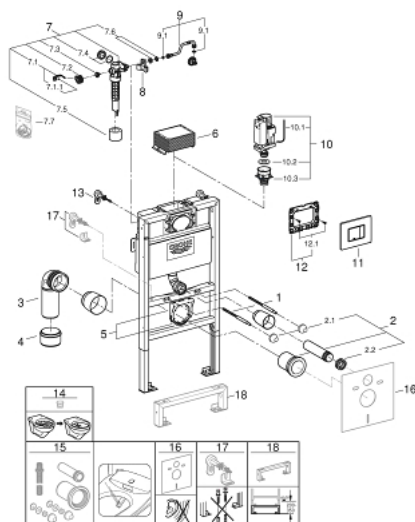


### PRODUCT DESCRIPTION

- Colour: chrome
- with flushing cistern 6 - 9 l
- consists of:
  - Rapid SL element for WC (38 526 000)
  - Skate Cosmopolitan flush plate, chrome (38 732 000)
  - GROHE Fresh retro-fit set (38 796 000)
  - wall brackets (38 558 00M)



## 38 885 000 **RAPID SL 4-IN-1 SET FOR WC, 0.82 M INSTALLATION HEIGHT**



### SPARE PARTS, October 2021 – now

- 1: Threaded bolt (Order-nr. 4276400M)
  - 2: WC inlet and outlet connecting set (Order-nr. 37311K00)
  - 2.1: Basin fastening (Order-nr. 43511SH0)
  - 2.2: Connector (Order-nr. 37119000)
  - 3: PP-outlet bend Ø 90 mm (Order-nr. 42327000)
  - 4: 4" Outlet Adaptor F Rapid SI (Order-nr. 42242000)
  - 5: Support for outlet bend (Order-nr. 42243000)
  - 6: inspection shaft for flushing cistern (Order-nr. 42326000)
  - 7: Filling valve (Order-nr. 37095000)
  - 7.1: Lever (Order-nr. 43734000)
  - 7.1.1: Ball seal dia. 9x6.8 mm (Order-nr. 4377000M)
  - 7.2: Valve head (Order-nr. 43536000)
  - 7.3: Membrane (Order-nr. 4375800M)
  - 7.4: Screw cap (Order-nr. 43735000)
  - 7.5: Valve float, 5 pcs. (Order-nr. 4379100M)
  - 7.6: Repl. kit f. seal (Order-nr. 43722000)\*
  - 8: Support device (Order-nr. 42195000)
  - 9: Overflow Sleeve (Order-nr. 43325000)
  - 9.1: Seat washer (Order-nr. 0319100M)
  - 10: Discharge valve AV1 complete (Order-nr. 42314000)
  - 10.1: pneumatic hose (Order-nr. 42319000)
  - 10.2: Ball seal dia. 9x6.8 mm (Order-nr. 42310000)
  - 10.3: Valve seat for GD2 (Order-nr. 42315000)
  - 11: top plate w. push button (Order-nr. 42374SD0)
  - 12: Frame (Order-nr. 42358000)
  - 12.1: Screw dia. 4x52 mm (Order-nr. 6636200M)
  - 13: Wall union (Order-nr. 3855800M)
  - 14: Water Connection (Order-nr. 48561000)
  - 15: Flow restrictor (Order-nr. 42300000)\*
  - 16: Retrofit kit for shower toilets Sensia Arena and IGS (Order-nr. 40899000)\*
  - 17: Set for noise protection (Order-nr. 37131000)\*
  - 18: Xtra wall brackets, flexible placing (Order-nr. 38733000)\*
  - 19: Extension (Order-nr. 38629000)\*
  - 20: Retro-fit set (Order-nr. 38796000)\*
- \* Optional accessories