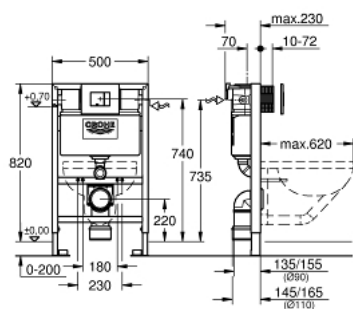


## 38 885 000 **RAPID SL 4-IN-1 SET FOR WC, 0.82 M INSTALLATION HEIGHT**

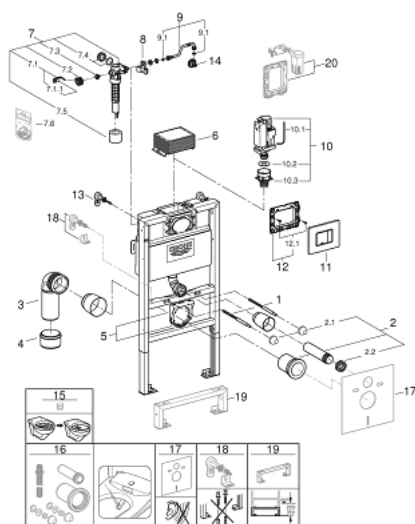


### PRODUCT DESCRIPTION

- Colour: chrome
- with flushing cistern 6 - 9 l
- consisting of:
- Rapid SL element for WC (38 526 000)
- Skate Cosmopolitan flush plate, chrome (38 732 000)
- GROHE Fresh retro-fit set (38 796 000)
- wall brackets (38 558 00M)



## 38 885 000 **RAPID SL 4-IN-1 SET FOR WC, 0.82 M INSTALLATION HEIGHT**



### SPARE PARTS, 10月 2021 – now

- 1: Threaded bolt (Order-nr. 4276400M)
- 2: WC inlet and outlet connecting set (Order-nr. 37311K00)
- 2.1: Basin fastening (Order-nr. 43511SH0)
- 2.2: Connector (Order-nr. 37119000)
- 3: PP-outlet bend Ø 90 mm (Order-nr. 42327000)
- 4: Reducer (Order-nr. 42242000)
- 5: Support for outlet bend (Order-nr. 42243000)
- 6: Inspection shaft for flushing cistern (Order-nr. 42326000)
- 7: Filling valve (Order-nr. 37095000)
- 7.1: Lever (Order-nr. 43734000)
- 7.1.1: Seal (Order-nr. 4377000M)
- 7.2: Valve head (Order-nr. 43536000)
- 7.3: Membrane (Order-nr. 4375800M)
- 7.4: Screw cap (Order-nr. 43735000)
- 7.5: Valve float, 5 pcs. (Order-nr. 4379100M)
- 7.6: Set of seals (Order-nr. 43722000)\*
- 8: Support device (Order-nr. 42195000)
- 9: Overflow Sleeve (Order-nr. 43325000)
- 9.1: Sealing washer (Order-nr. 0319100M)
- 10: Discharge valve AV1 complete (Order-nr. 42314000)
- 10.1: Pneumatic hose (Order-nr. 42319000)
- 10.2: Seal (Order-nr. 42310000)
- 10.3: Valve seat for GD2 (Order-nr. 42315000)
- 11: Top plate with push button (Order-nr. 42374SD0)
- 12: Mounting frame (Order-nr. 42358000)
- 12.1: Screw (Order-nr. 6636200M)
- 13: Wall brackets (Order-nr. 3855800M)
- 14: Water connection (Order-nr. 48561000)
- 15: Flow restrictor (Order-nr. 42300000)\*
- 16: Retrofit kit for shower toilets Sensia Arena and IGS (Order-nr. 40899000)\*
- 17: Set for noise protection (Order-nr. 37131000)\*
- 18: Xtra wall brackets, flexible placing (Order-nr. 38733000)\*
- 19: Extension (Order-nr. 38629000)\*
- 20: Retrofit set (Order-nr. 38796000)\*