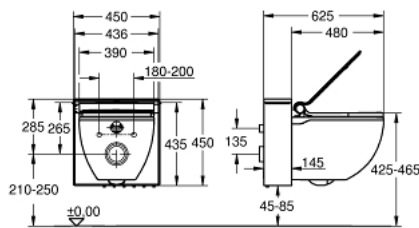


39 111 LP0 GROHE SENSIA IGS SHOWER TOILET COMPLETE SYSTEM FOR CONCEALED FLUSHING CISTERNS, WALL-HUNG



PRODUCT DESCRIPTION (1/2)

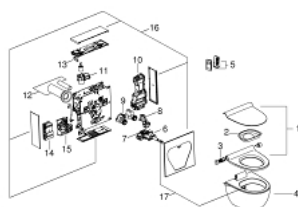
- Colour: alpine white/alpine white
- GROHE Hygiene decalcification program, unique 70°C hot water cleaning for entire water system, automatic shower cleaning before and after every use
- GROHE DreamSpray technology:
 - separate water way for lady spray
 - aerated shower spray
 - oscillating spray (automatic forward and reverse motion of the spray)
 - pulsating spray for massage
 - adjustable spray intensity
- automatic pre- and post-rinsing of spray nozzle with fresh water
- warm water with adjustable temperature
- Additional functions:
 - warm air dryer with adjustable temperature
 - odor extraction with filter
 - Duroplast WC seat and lid with soft close function
 - push and turn seat control operation
 - 4 programmable user profiles for remote controller
 - power switch
 - inside night lighting
 - hidden water supply and power supply connections
- includes:
 - touchscreen remote control with wall-mounted holder
 - batteries for remote controller
 - active carbon filter
 - fixing and connecting material
 - flush pipe
 - cable with system plug on device
 - installation guide, manual
- pressure 0.1 - 1.0 MPa (1 - 10 bar)
- nominal voltage 220-240 V AC 1400 W
- main frequency 50-60 Hz
- type of protection IPX4

39 111 LP0 **GROHE SENSIA IGS SHOWER TOILET COMPLETE SYSTEM FOR CONCEALED FLUSHING CISTERNS, WALL-HUNG**

PRODUCT DESCRIPTION (2/2)

- complying with EN 1717/13077
- CE approved
- LP0: alpine white ceramic, front, seat and lid matt chrome housing

39 111 LP0 GROHE SENSIA IGS SHOWER TOILET COMPLETE SYSTEM FOR CONCEALED FLUSHING CISTERNS, WALL-HUNG



SPARE PARTS, 8月 2018 – now

- 1: WC seat and lid (Order-nr. 14913000)
- 2: Splash protection (Order-nr. 14914000)
- 3: Operating unit (Order-nr. 14916000)
- 4: WC-ceramic (Order-nr. 14900000)
- 5: Remote control (Order-nr. 14915000)
- 6: Shower unit (Order-nr. 14904000)
- 7: Interface print (Order-nr. 14908000)
- 8: Dryer (Order-nr. 14905000)
- 9: Flush device (Order-nr. 14910000)
- 10: Boiler (Order-nr. 14902000)
- 11: Odour extraction (Order-nr. 14909000)
- 12: Connecting pipe (Order-nr. 14917000)
- 13: LED-print (Order-nr. 14907000)
- 14: Electronic (Order-nr. 14906000)
- 15: Pump (Order-nr. 14903000)
- 16: Panel set (Order-nr. 14911LP0)
- 17: Spray (Order-nr. 14912000)