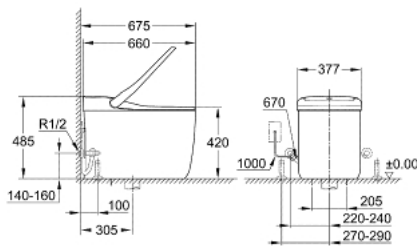


39 380 SH0 GROHE SENSIA ARENA SHOWER TOILET COMPLETE SYSTEM, FLOORSTANDING



PRODUCT DESCRIPTION (1/2)

- Colour: alpine white
- GROHE Hygiene Clean: with antibacterial glazing HyperClean (SIAA Kokin Japanese standard compliant) and non-stick coating AquaCeramic
- GROHE power flush: rimless siphon jet WC with GROHE Triple Vortex flushing technology
- GROHE Skin Clean:
 - 2 dedicated adjustable spray arms (1 for anal area, 1 for front spray)
 - separate water way for front spray
 - oscillating spray (automatic forward and reverse motion of the spray)
 - pulsating spray for massage
 - adjustable spray intensity
 - automatic pre- and post-rinsing of spray nozzle with fresh water
- integrated instant heater provides unlimited warm water
- adjustable temperature
- Additional functions:
 - warm air dryer with adjustable temperature
 - odor extraction with filter
 - heated WC seat with automatic opening/close function
 - infra-red user detection
 - power switch
 - inside bowl night light
 - remote control
 - smart phone app for iOS and Android
 - music unit
- includes:
 - drain socket for floor mounting
 - manual remote controller with wall-mounted holder
 - active carbon filter for odour absorption
 - nozzle guard
- pressure 0.1 - 0.75 MPa (0.1 - 7.5 bar)
- nominal voltage 220-240 V AC
- main frequency 60 Hz

Pure Freude
an Wasser



39 380 SH0 GROHE SENSIA ARENA SHOWER TOILET COMPLETE SYSTEM, FLOORSTANDING

PRODUCT DESCRIPTION (2/2)

- type of protection IPX4
- CNS approved